



41 Woodland View, Bashley Park, BH25 5QR

Offers in the region of £167,500

Mitchells
1963 — TODAY



*41 Woodland View
Bashley Park
New Milton
Hants
BH25 5QR*

**** Holiday Home **** This fantastic 45 x 22 holiday lodge is positioned in the most desirable position on this high popular holiday park situated on the edge of The New Forest National Park. The property has been beautifully maintained, and features include a triple aspect kitchen/family room, a separate utility, three double bedrooms, a dressing room, a luxury ensuite, a family bathroom and a large private decking area.

- Pemberton Glendale
- Sitting Room
- Kitchen/Dining Room
- Utility Room
- Hallway
- Three Double Bedrooms
- Dressing Room
- Ensuite Shower Room
- Family Bathroom
- Large & Private Decking



The Property

The open planned kitchen/family room is a particular feature of this property with a bright and airy triple aspect, a Velux window, two sets of bifold doors leading out to the private decking, a feature fireplace and a luxury fully fitted kitchen with a central island and a vaulted ceiling.

The separate utility room is a fantastic feature of this property with a range of timber effect wall and base units, a stainless steel sink with mixer tap over and drainer, an integrated washer dryer and useful storage cupboards.

Bedroom three is a twin bedroom with two single beds, a built in wardrobe and a dressing table.

The family bathroom, also doubling up as a Jack and Jill ensuite to bedroom two, is fitted with a modern suite comprising a corner shower cubicle with thermostatic shower attachments, wall hung wash hand basin with mixer tap over and built in storage, panel bath with mixer tap over and hand held shower attachment, chrome heated towel rail and WC.

Bedroom two is great sized double bedroom with a king size double bed, bedside cabinets, built in wardrobes and has an outlook over the decking.

The master bedroom suite is a lovely addition to this lodge with a large built in dressing table, a walk in dressing room with a range of built in storage and its own luxury ensuite shower room with a large double walk in shower cubicle with a sliding glass shower screen, wall hung wash hand basin with built in storage, corner WC, chrome heated towel rail and extractor fan.

The property must be viewed to be fully appreciated.





Gardens & Grounds

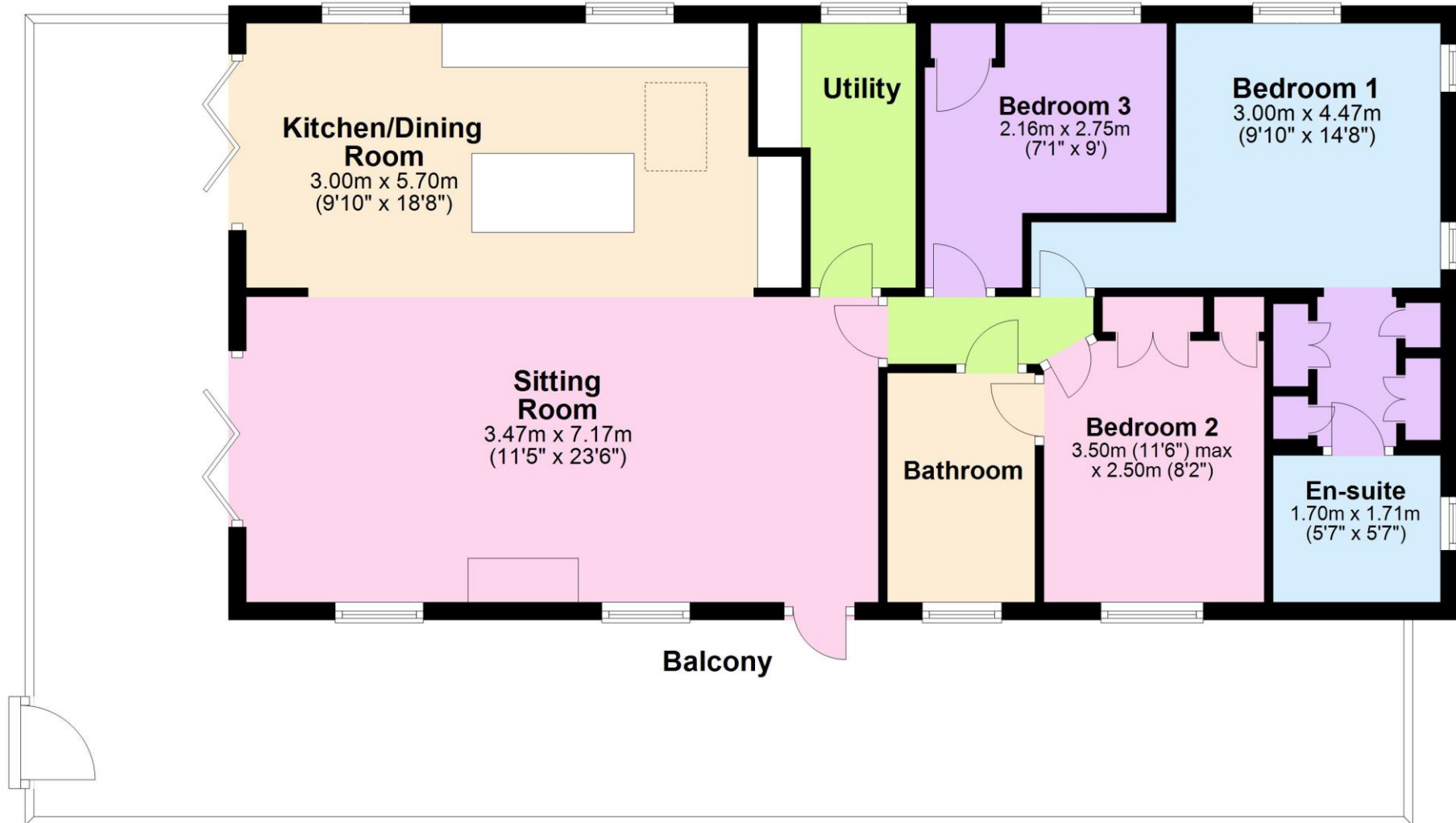
Outside the property is a large area of private decking with built in lighting and making a fantastic area for outside entertaining and there is a large area of green to the side making this unit extremely private and secluded.

Services

- Mains gas, electric, drainage and water
- Council Tax Band
- Energy Performance Rating To be confirmed

Floor Plan

Approx. 89.1 sq. metres (959.1 sq. feet)



Total area: approx. 89.1 sq. metres (959.1 sq. feet)

'Whilst every attempt has been made to ensure the accuracy of this floor plan, the measurements of doors, windows, rooms and any other items are approximate and no responsibility is taken for any error, omission or mis-statement. This plan is for illustrative purposes only and should be used as such by any prospective purchaser.'

Plan produced using PlanUp.

Situation

In the heart of the enchanting New Forest Hoburne Bashley is a magical place to escape to with the open forest of the New Forest National Park, Barton on Sea clifftop and beach and New Milton high street all within easy reach. Facilities on offer at the park include an impressive entertainment complex, 9 hole golf course, heated pools, café and Brasserie, convenience store and a multi-use games area.

Directions

From Mitchells turn left at the traffic lights and proceed over the railway bridge. Continue to the Bashley roundabout and turn right onto Sway Road. After approximately 500 yards turn left into Bashley Park. Follow the road and after passing reception, take the first left, then the second right onto Woodland View where the property will be found at the end directly in front of you.





Mitchells.uk.com
info@mitchells.uk.com
01425 616411

Centenary Buildings
8-10 Old Milton Road
New Milton
Hampshire
BH25 6DT

Mitchells
1963 — TODAY

