



25 Gordon Road, Highcliffe on Sea, BH23 5HN

£569,950 Freehold

Mitchells
1963 — TODAY



Gordon Road, Highcliffe on Sea

An attractive and extended Victorian semi-detached family residence enviably positioned in the very heart of Highcliffe-on-Sea, moments from the town centre, clifftop and beach. This impressive four bedroom, four bathroom (three en-suite & one GF shower/utility room) home combines period charm with high-quality contemporary living, centred around a striking partially vaulted kitchen and living space. Designed for modern family life and entertaining, the space features a bespoke handmade kitchen and an abundance of natural light, creating a superb focal point to the home. Outside the property benefits from off-road parking and a selection of useful powered outbuildings, ideal for storage, a home office or studio.

• FOUR BEDROOMS • FOUR BATH/SHOWER ROOMS (THREE EN-SUITE & ONE GF SHOWER/UTILITY ROOM) •
UTILITY ROOM KITCHEN/DINER • STUDY • GARDEN ROOM • STUDIO • SHED • GARAGE • OFF-ROAD PARKING •



The Property

- Extended character family home
- Four bedrooms
- Four bath/shower rooms (three en-suite & a GF shower/utility room)
- Large master suite with Juliette balcony
- Stunning partially vaulted bespoke kitchen/living space
- Formal sitting room
- Separate study
- Prime town centre and coastal position
- Large garden approx. 80ft in length
- Off-road parking
- Outbuildings both with power
- Highly sought after location
- EPC 'D'
- Council Tax 'D' £2287.80

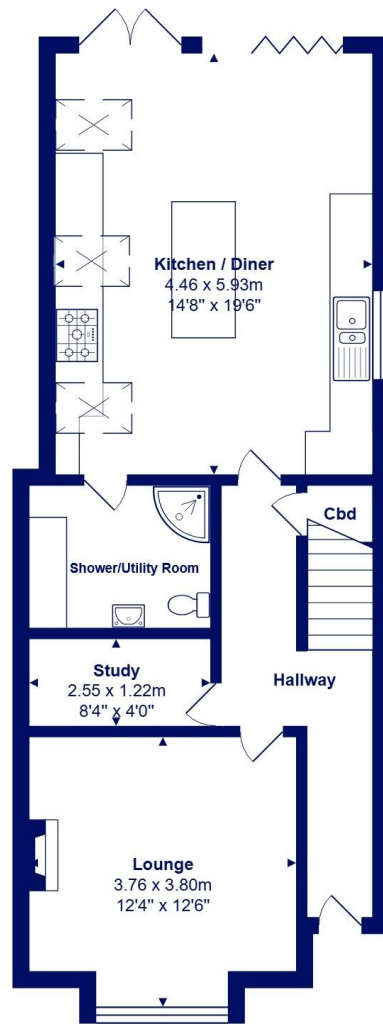




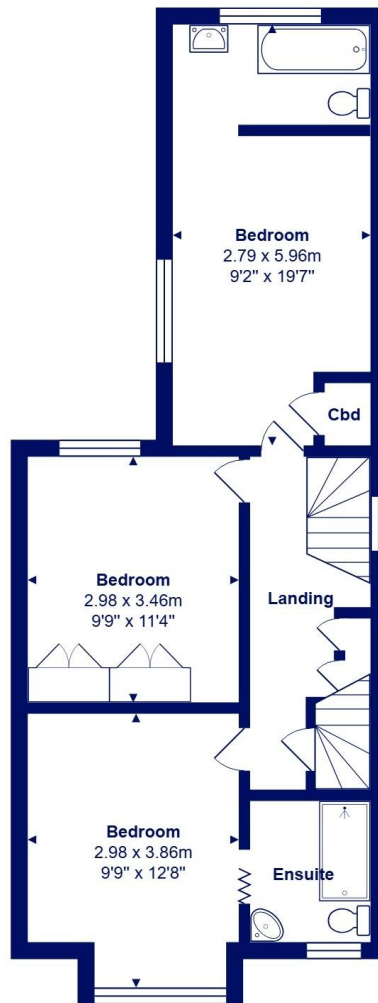
Location

Highcliffe is a small village in the borough of Christchurch, Dorset. The village lies on a picturesque stretch of Solent coastline with views over Christchurch Bay to the Isle of Wight. Fuelled by its enviable location, coastal walks, main line railway links to London (in under two hours) excellent schools and the popularity of the Chewton Glen Hotel, the Highcliffe Golf Course and the Nature Reserve at Steamer Point, Highcliffe is a popular area for those relocating to the coast.

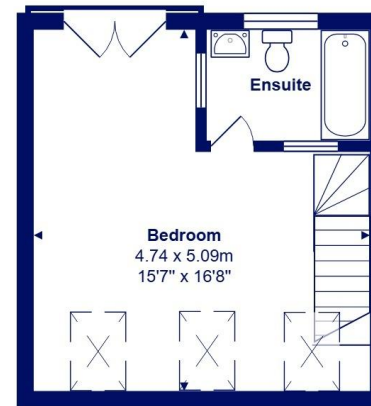




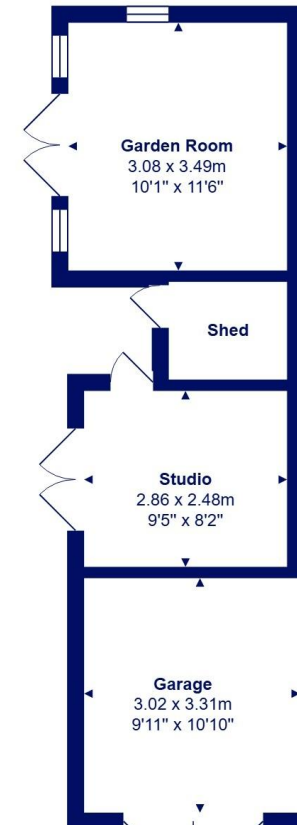
Ground Floor



First Floor



Second Floor



Outbuildings



Total Area: 135.7 m² ... 1461 ft² (excluding outbuildings)

All measurements are approximate and for display purposes only







mitchells.uk.com
highcliffe@mitchells.uk.com
01425 272206

Highcliffe
284 Lymington Road
Highcliffe on Sea
BH23 5ET

