



17 Shelley Close, Highcliffe on Sea, BH23 5AH

£1,100,000

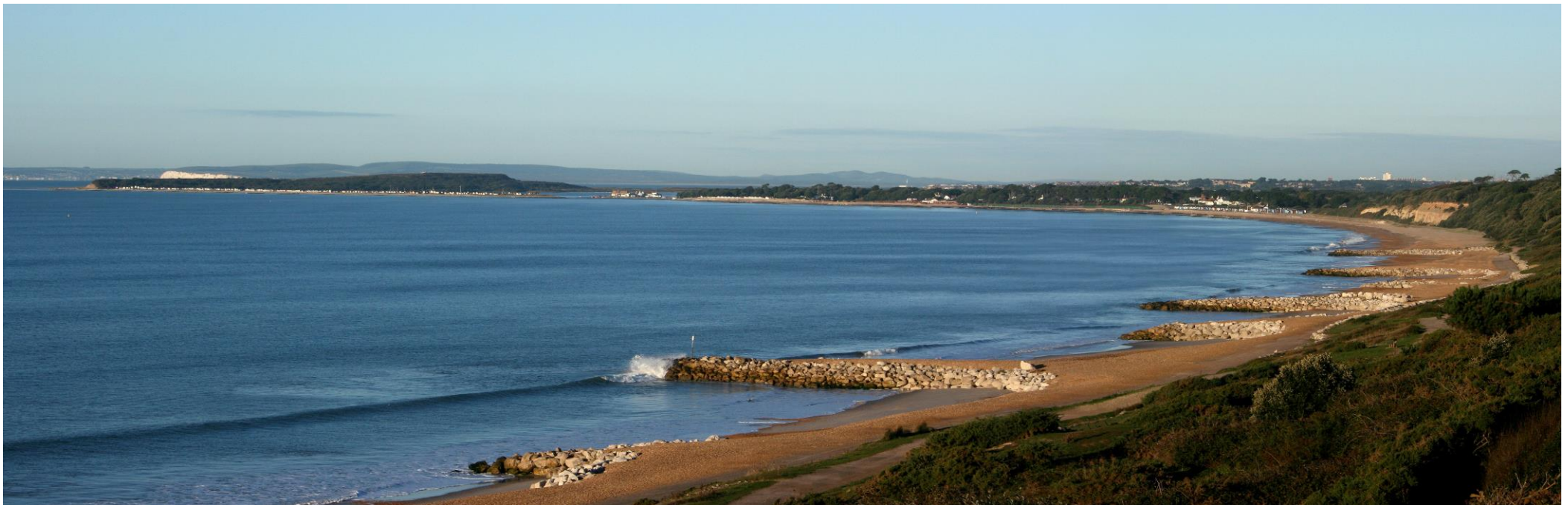
Mitchells
1963 — TODAY



Shelley Close, Highcliffe on Sea

A simply stunning home of approaching 3400sqft of living accommodation, stylishly refurbished with a very high specification and designer fittings throughout. The house oozes quality with four bedrooms, all with luxury en-suites, superb open plan kitchen/living space and a fabulous self-contained garden room also with its own en-suite. The landscaped and low maintenance garden is south facing and has a fully functioning bar and BBQ area perfect for entertaining. Located just across the road from the exclusive area of Friars Cliff, just moments from the beach.

- FOUR BEDROOMS • FOUR BATH/SHOWER ROOMS (FOUR EN-SUITE) • KITCHEN/FAMILY ROOM • UTILITY ROOM • STUDY
- GARDEN ANNEXE & SHOWER ROOM • GARDENS • OFF-ROAD PARKING •



The Property

- Stunning individual home on a south facing plot that has been fully refurbished to a very high specification by the current vendors
- Luxury master suite including walk-in wardrobe, large en-suite bathroom and its own steam room
- Three double bedrooms with bespoke fitted wardrobes and all with en-suite shower rooms
- Gorgeous kitchen/day/dining room with quality units and worktops, integrated appliances, built-in cabinetry to the day room and access to the large rear patio
- Separate Utility area with access onto side storage area
- Separate dining room
- Impressive reception hall with tiled floor throughout the ground floor
- South facing fully landscaped rear garden with large patio and its own fully equipped bar/BBQ area ideal for entertaining
- Garden annexe/bedroom five with en-suite shower room
- Gas fired central heating, upvc double glazing & neutral décor throughout
- Immaculate presentation inside and out
- A very impressive house situated on a quiet close within a short stroll of the sandy beach at Friars Cliff
- Council Tax 'E' £2796.19
- EPC 'B'

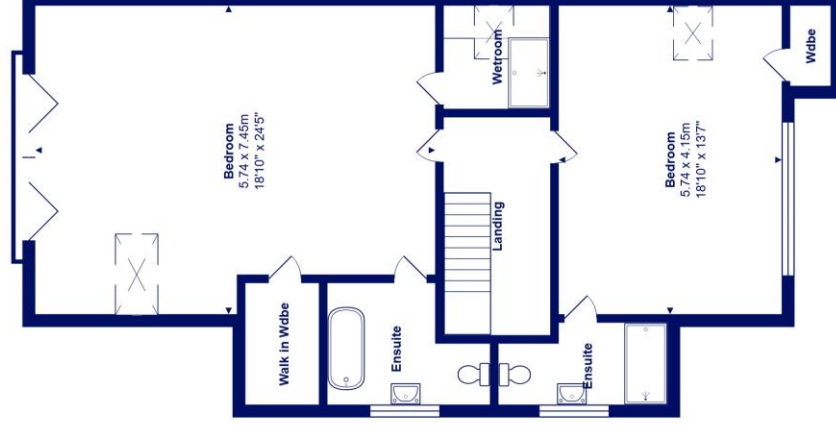
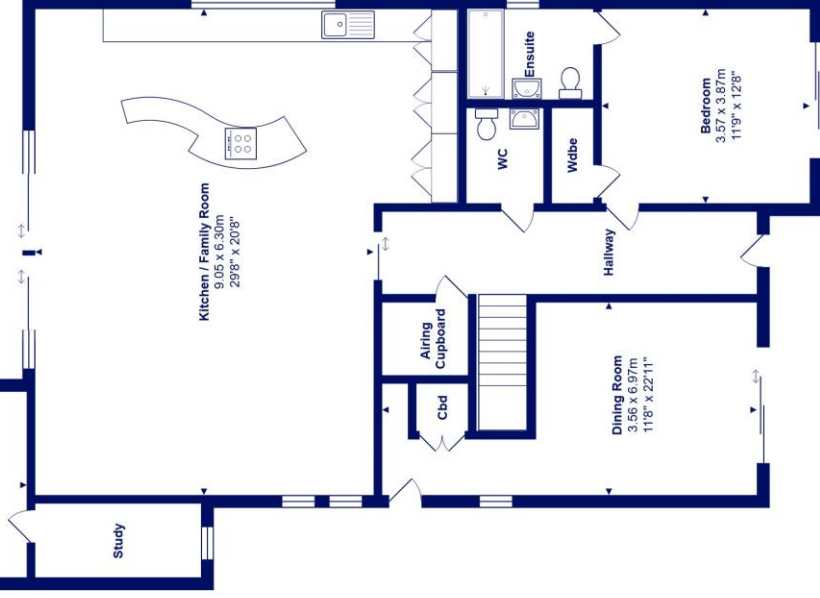
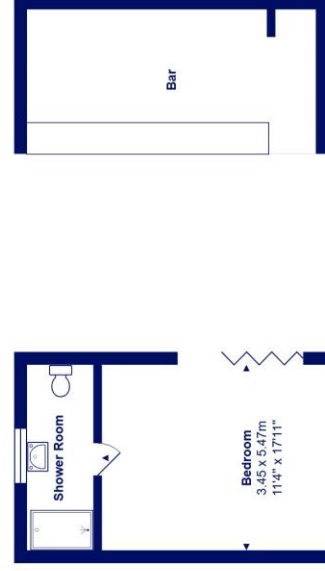




Location

Highcliffe is a small village in the borough of Christchurch, Dorset. The village lies on a picturesque stretch of Solent coastline with views over Christchurch Bay to the Isle of Wight. Fuelled by its enviable location, coastal walks, main line railway links to London (in under two hours) excellent schools and the popularity of the Chewton Glen Hotel, the Highcliffe Golf Course and the Nature Reserve at Steamer Point, Highcliffe is a popular area for those relocating to the coast.





Ground Floor

First Floor



Total Area: 304.0 m² ... 3273 ft²

All measurements are approximate and for display purposes only





mitchells.uk.com
highcliffe@mitchells.uk.com
01425 272206

Highcliffe on Sea
284 Lymington Road
Highcliffe on Sea
BH23 4TH

