



SHELDRAKE ROAD, MUDEFORD, DORSET BH23 4BP

£935,000 Freehold

Mitchells
1963 — TODAY



Sheldrake Road, Mundeford, Christchurch, Dorset BH23 4BP

A fabulous coastal style bungalow of nearly 1400 sq ft, featuring fantastic open plan living accommodation with bifold doors, generous master bedroom suite and three luxurious bath/shower rooms. This lovely home benefits from an integral garage, driveway parking for multiple cars and a beautiful and a private, south facing rear garden. Enviably situated in this superb pocket of Mundeford, moments from Avon Beach and Mundeford Quay.

**THREE BEDROOMS • THREE BATH/SHOWER ROOMS (two en-suite) • KITCHEN/LOUNGE/DINER • UTILITY ROOM
GARDEN • GARAGE • OFF ROAD PARKING**

** video tour available online**



The Property

- Impressive spacious reception hall
- Fabulous large kitchen/dining/family room with bifold doors
- Quality Integrated appliances
- Generous master suite with dressing area
- Three luxury bath/shower rooms
- uPVC double glazing and gas fired central heating
- Short walk from Avon Beach and Mudeford Quay
- Sunny southwest facing private rear garden
- Plenty of off road parking with Integral garage
- Council Tax Band 'D' - £2217.98
- EPC rating 'C'

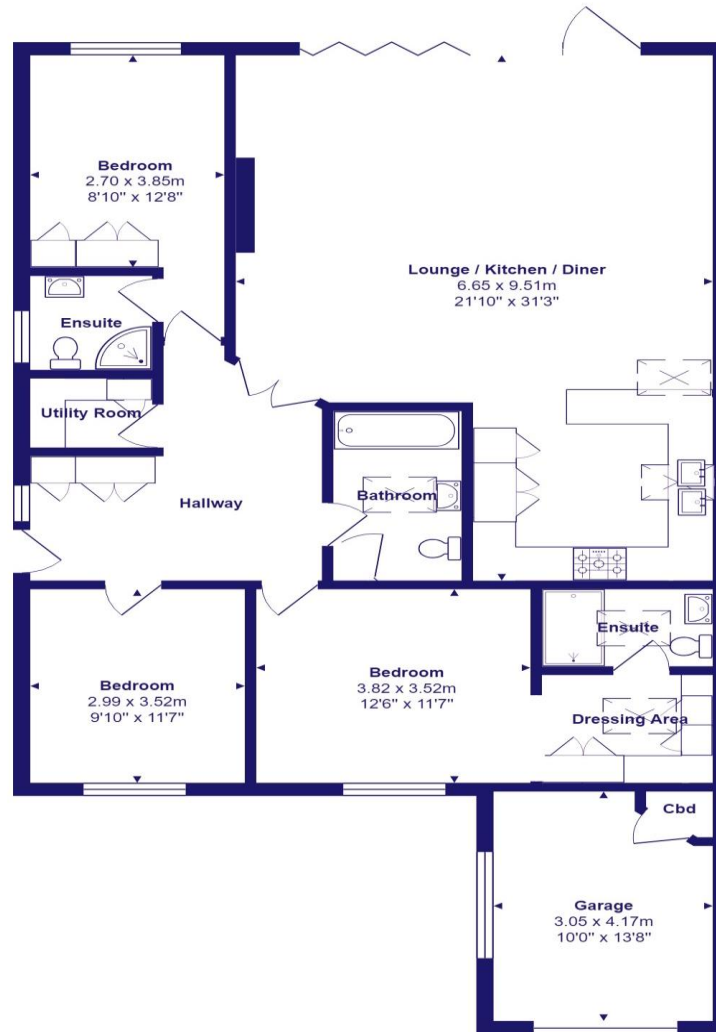




Location

Mudford began as a small fishing village close to the entrance of Christchurch Harbour which still sees fishing boats landing their catch today. The area enjoys award winning sandy beaches at Avon beach and plenty of wildlife activity on Hengistbury Head and Stanpit Marsh Nature Reserve. The popular Mudford Sandbank attracts visitors every year to the private beach huts with the Harbour providing a sheltered environment for watersports activities. With a friendly, community feel, it is no wonder Mudford is becoming a popular choice for relocation.





Total Area: 125.8 m² ... 1355 ft² (excluding garage)
 All measurements are approximate and for display purposes only







mitchells.uk.com

mundeford@mitchells.uk.com

01202 499295

Mundeford

Cambridge House

112-114 Stanpit

BH23 3ND

