



19 Hinton Wood Avenue, Highcliffe on Sea, BH23 5AB

£1,000,000

Mitchells
1963 — TODAY



Hinton Wood Avenue, Highcliffe on Sea

A superb detached chalet in this prestigious location, close to the cliff top and high street with about 2050sqft of luxuriously appointed living space having been carefully remodelled and updated to the highest of standards. Standing on a gorgeous plot with a beautifully landscaped gardens featuring two substantial garden buildings and various raised decks/sun terraces. Strongly recommended.

- FOUR BEDROOMS • THREE BATH/SHOWER ROOMS (ONE EN-SUITE) • KITCHEN/DINER • UTILITY ROOM • LOUNGE • GARDEN ROOM • GARDEN STUDIO • GARAGE • GARDENS • OFF-ROAD PARKING •



The Property

- Immaculate and substantial chalet style home in excellent location
- Stylish fittings with designer sanitary ware and tiling
- Outstanding open plan kitchen/dining/living space leading onto the sun deck
- Beautiful, two tone 'in frame' shaker kitchen with granite worktops and integrated appliances
- Fabulous large master bedroom with bespoke fitted wardrobes and en-suite
- Three further double bedrooms
- Two additional bath/shower rooms
- Lovely large sitting room with feature log burner
- Large secluded plot, 2 substantial garden buildings/studios ideal for homeworking/additional living space/bar/gym
- Short stroll to the high street, cliff top and beach and about one mile from train station
- Council Tax 'F' £3141.96
- EPC 'D'

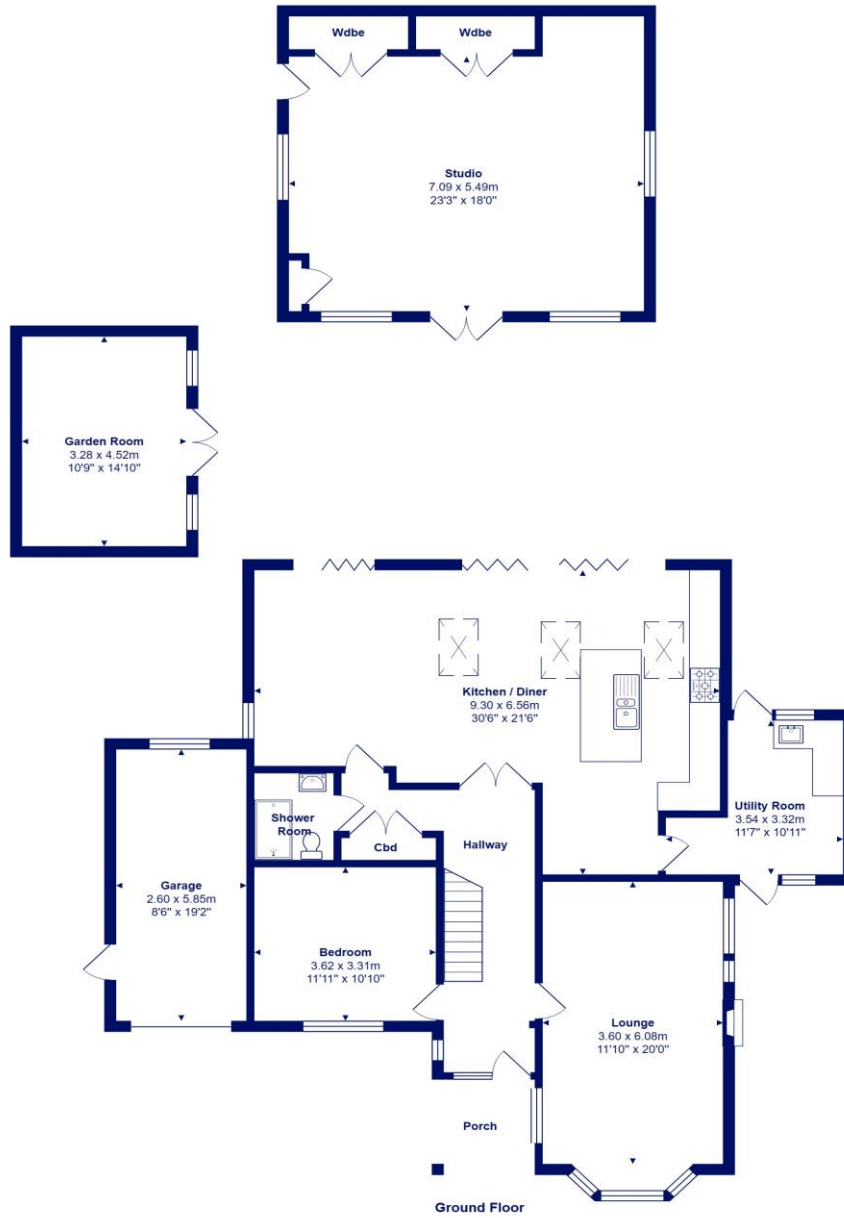




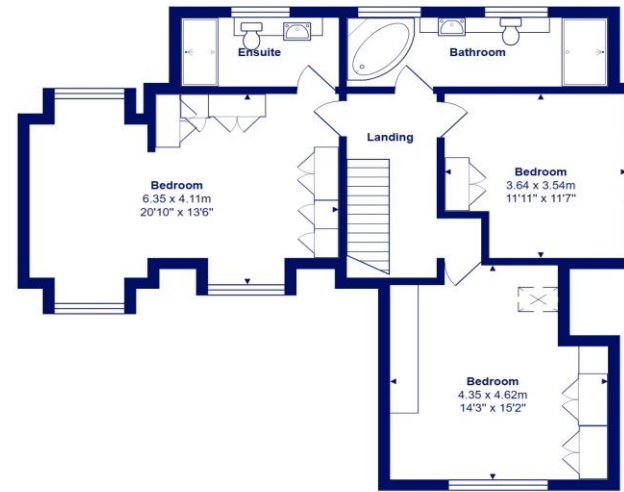
Location

Highcliffe is a small village in the borough of Christchurch, Dorset. The village lies on a picturesque stretch of Solent coastline with views over Christchurch Bay to the Isle of Wight. Fuelled by its enviable location, coastal walks, main line railway links to London (in under two hours) excellent schools and the popularity of the Chewton Glen Hotel, the Highcliffe Golf Course and the Nature Reserve at Steamer Point, Highcliffe is a popular area for those relocating to the coast.





Ground Floor



First Floor



Total Area: 190.3 m² ... 2048 ft² (excluding porch, garage, garden room, studio)

All measurements are approximate and for display purposes only







mitchells.uk.com
highcliffe@mitchells.uk.com
01425 272206

Highcliffe
284 Lymington Road
Highcliffe
BH23 5ET

