



*15 Woodfield Gardens, Highcliffe on Sea, BH23 4QA*

*£585,000*

**Mitchells**  
1963 — TODAY





# *15 Woodfield Gardens, Highcliffe on Sea*

A stylish detached chalet of about 1600sq ft, presented in excellent condition and enjoying an open outlook over the green to the front. The chalet has been skilfully converted and features generous bedroom sizes and great open plan living space with a detached studio/annexe with shower room in the garden suitable for a teenager/young adult, possibly for short terms rental or working from home. This super home is situated close to Highcliffe Comprehensive and Sixth form and within walking distance of the train station so perfect for family living. It is in show home order with a smart, contemporary kitchen and refurbished bath/shower rooms with a decent garden to the rear and plenty of off-road parking.

**Main property • FOUR BEDROOMS • THREE BATH/SHOWER ROOMS (ONE EN-SUITE) • KITCHEN/DINER • LOUNGE  
• ENTRANCE PORCH • OFF-ROAD PARKING • GARDENS • Annexe • KITCHEN • BEDROOM • TWO EN-SUITE  
SHOWER ROOMS • STUDIO •**





## The Property

- Established residential location and close to Nea Meadows nature reserve and the shops at Saulfland's about one mile to Highcliffe centre
- Four double bedrooms and three bath/shower rooms in the main chalet
- Impressive, open plan 'L' shape kitchen/dining/family room with access to the rear garden
- Separate lounge with interconnecting doors to the dining area
- Welcoming entrance porch and reception hall with hard floors
- Converted garage into a studio/bedsit with cooking facilities and shower room, private access and previously used for short term rental
- Further studio office with wc
- Generous garden, hard landscaped with ample parking to on the driveway
- Council Tax 'E' £2796.19
- EPC 'D'



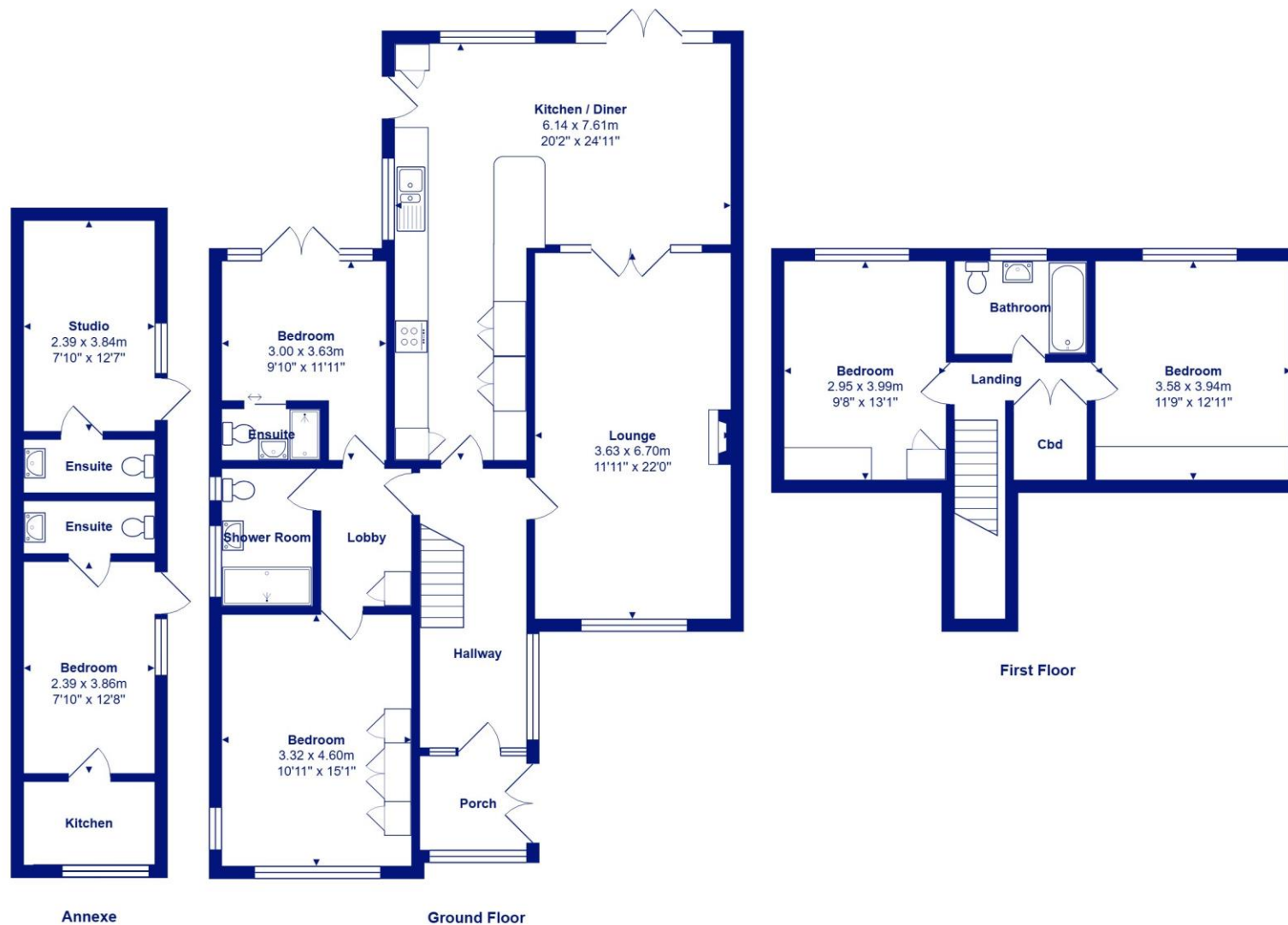




## Location

Highcliffe is a small village in the borough of Christchurch, Dorset. The village lies on a picturesque stretch of Solent coastline with views over Christchurch Bay to the Isle of Wight. Fuelled by its enviable location, coastal walks, main line railway links to London (in under two hours) excellent schools and the popularity of the Chewton Glen Hotel, the Highcliffe Golf Course and the Nature Reserve at Steamer Point, Highcliffe is a popular area for those relocating to the coast.





Total Area: 177.1 m<sup>2</sup> ... 1906 ft<sup>2</sup>

All measurements are approximate and for display purposes only











[mitchells.uk.com](http://mitchells.uk.com)  
[highcliffe@mitchells.uk.com](mailto:highcliffe@mitchells.uk.com)  
01425 272206

Highcliffe on Sea  
284 Lymington Road  
Highcliffe on Sea  
BH23 4TH

