

3 SIKA RISE
BRANSGORE, BH23 8FA





SIKA RISE, BRANSGORE

A stunning detached house on the fringes of the thriving New Forest village of Bransgore, enjoying a delightful sylvan backdrop with private gardens. Finished to an exacting specification by AJ Developments with designer fittings throughout, this fabulous home is within strolling distance of the excellent local Primary School, two first class pubs and the bustling parade of shops in the village centre with the open forest being just over a mile distant.

- THREE BEDROOMS • TWO BATH/SHOWER ROOMS (ONE EN-SUITE) • KITCHEN/BREAKFAST ROOM • LIVING ROOM • GF WC • CAR PORT • PARKING SPACE • GARDENS



The Property

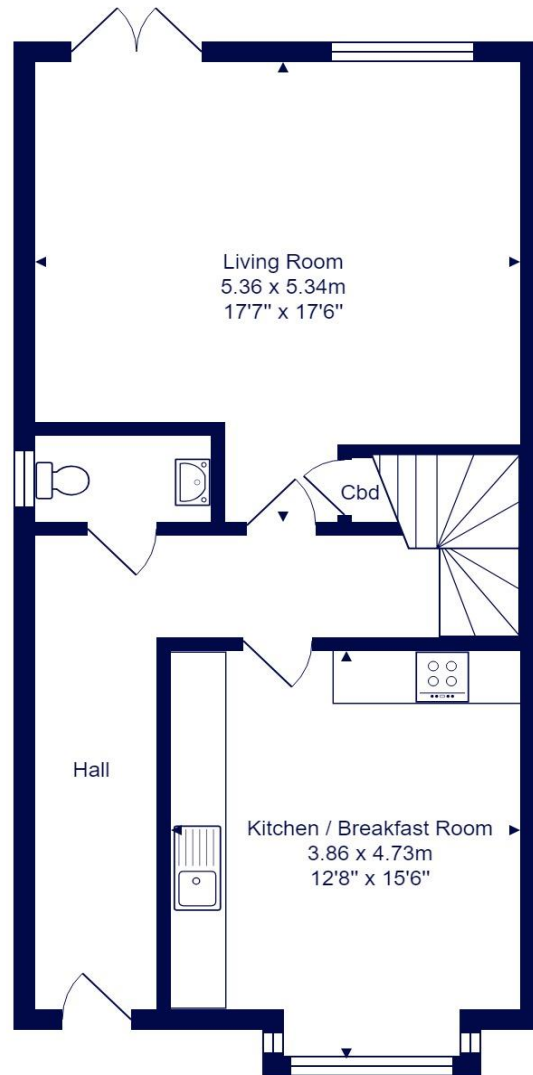
- Detached house of approx 1300sqft
- Designer Liecht kitchen/dining room with granite worktops and Siemens integrated appliances
- Lovely lounge with access onto the garden
- Three first floor bedrooms with bespoke fitted wardrobes to bedroom one & three
- Impressive family bathroom
- Laufen sanitary ware, HansGrohe fittings and tiling by Porcelenosa
- Gas fired underfloor heating (Vaillant boiler) to ground floor with radiators upstairs
- Remainder of 10year ICW new home guarantee
- Single oak framed carport with additional parking space
- Council Tax 'E' NFDC
- EPC 'B'



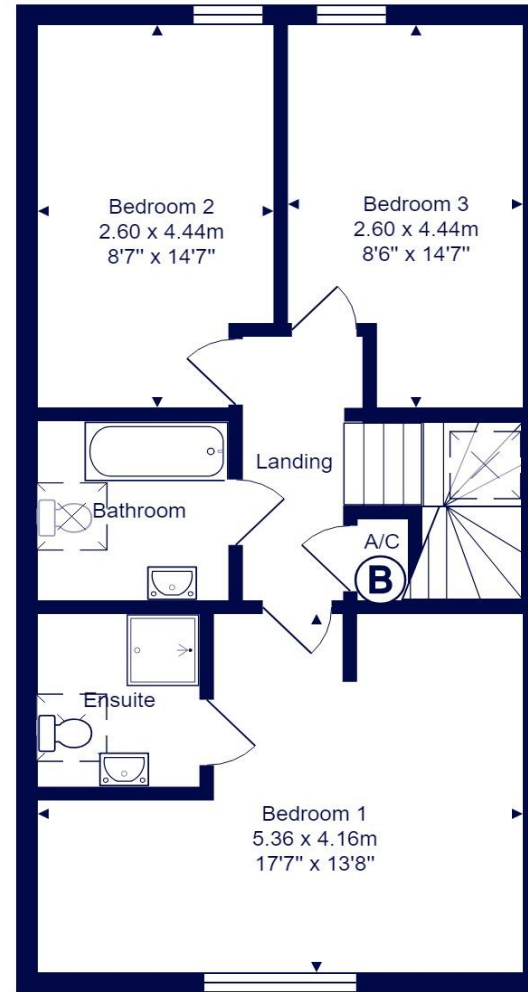


Location

Bransgore is small village bordering the beautiful New Forest National Park, there is a good array of local shops, pubs, eateries, two medical centres, village hall and the popular Primary School, which in turn is a feeder for both the highly Highcliffe Comprehensives and Ringwood Academy. The historic priory town of Christchurch with its pretty harbour is approximately five miles distant and access to London in under two hours, from the mainline station at Hinton Admiral.



Ground Floor



First Floor

Total Area: 119.0 m² ... 1281 ft²

All measurements are approximate and for display purposes only.





284 Lymington Road, Highcliffe on Sea, Christchurch, Dorset BH23 5ET highcliffe@mitchells-estateagents.co.uk

01425 272206

mitchells.uk.com