



Brooms Cottage, Dark Lane, Hinton, BH23 7EA

£799,950

Mitchells
1963 — TODAY



Brooms Cottage, Dark Lane, Hinton

A simply stunning and characterful home in this unique position within the borough offering the rural lifestyle but without being remote. Brooms Cottage enjoys about 1600sqft of beautifully appointed living space which is flooded with natural light and is set in glorious gardens with the additional benefit of an adjacent paddock, detached double garage and an abundance of parking. This is a very special home in a very special location.

• THREE/FOUR BEDROOMS • TWO BATH/SHOWER ROOMS (ONE EN-SUITE) • BATHROOM • STUDY/BEDROOM FOUR • LOUNGE • KITCHEN/BREAKFAST ROOM • UTILITY ROOM • CONSERVATORY • GF WC • OFF-ROAD PARKING



The Property

- Superb, individual semi-detached country home of about 1600sqft
- First class decorative order with quality fittings throughout and a real sense of style
- Lovely, large drawing room with high ceilings and feature fireplace
- Country style kitchen/dining room with views over the gardens
- Four first floor bedrooms and two bath/shower rooms
- Delightful reception hall with full height glazing, attractive staircase and landing
- Idyllic plot and setting with wonderful gardens and adjacent paddock (0.46 acre, leased from Meyrick Estate for £185 p.a.)
- Open fields for dog walking nearby with Highcliffe centre, cliff top and beach being just over two miles away
- Mainline railway station at Hinton Admiral (one mile away) giving access to London in under two hours
- Council Tax 'F' NFDC
- EPC 'E'

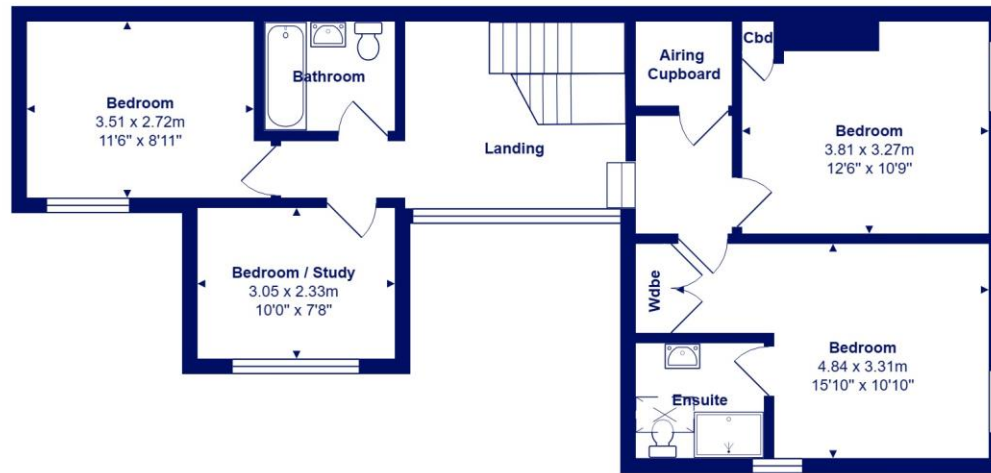




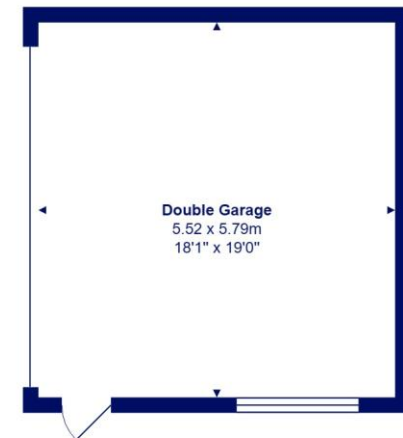
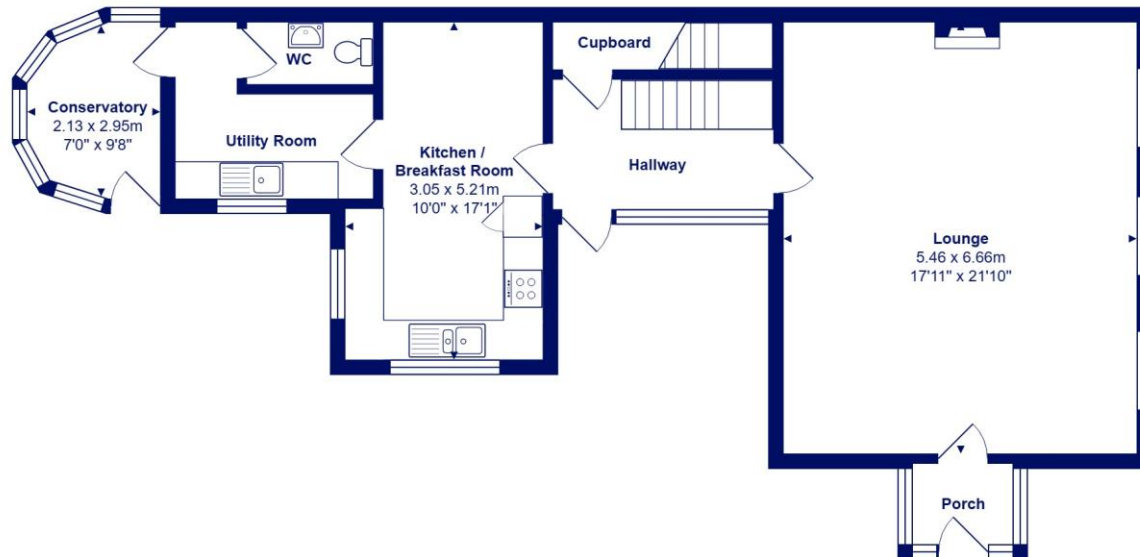
Location

Hinton is a charming rural hamlet on the outskirts of the larger villages of Bransgore, Walkford and Highcliffe. Situated close to the superb stretch of Solent coastline with views over Christchurch Bay to the Isle of Wight. Fuelled by its enviable location, coastal walks, main line railway links to London (in under two hours) excellent schools and the popularity of the Chewton Glenn Hotel, Highcliffe Castle Golf Course and not forgetting the beautiful New Forest National Park.





First Floor







mitchells.uk.com
highcliffe@mitchells.uk.com
01425 272206

Highcliffe
284 Lymington Road
Highcliffe
BH23 5ET

