



5 Dracaena Court, Barton On Sea, BH25 7HN

£285,000

Mitchells
1963 — TODAY



*5 Dracaena Court
49 Seaward Avenue
Barton On Sea
Hampshire
BH25 7HN*

This beautifully presented bright and airy first floor apartment is situated just a stone's throw of Barton On Sea clifftop and beach. The property offers bright and modern accommodation with features including a L-shaped sitting/dining room, a modern kitchen, a master bedroom with an en-suite and owns a share of the freehold.

- Entrance Hall
- Hallway
- Sitting Room
- Dining Room
- Kitchen
- Two Double Bedrooms
- En-Suite Shower Room
- Family Bathroom
- Communal Garden
- Parking
- Garage



The Property

Entrance hall with useful coat hooks, carpeted flooring and doorway through to the main hall.

Entrance hall with smooth textured ceilings, useful storage cupboard housing the electrical consumer unit, entry phone system and radiator.

The L-shaped sitting/dining room is a particular feature of this property with a bright southerly aspect, ample space for furniture, TV aerial point, Juliet balcony and an archway leads through to the dining room.

The kitchen has been recently updated and now comprises of modern wall and base units with a contrasting quartz effect worktop, breakfast bar, one and a half bowl sink with mixer tap over and drainer, modern wall mounted glow worm combination boiler, built in appliances include a washer dryer, four burner gas hob with undercounter oven, extractor fan over, tiled splashback and space and plumbing for a tall stand up fridge freezer and a large walk in larder style storage cupboard.

Bedroom two is a double bedroom and is situated at the front of the property with ample space for a double bed and wardrobes.

The master bedroom is a lovely double bedroom with lots of built in furniture, a large UPVC with an outlook to the front and enjoys its own en-suite shower room.

The en-suite comprises of a WC, wall hung wash hand basin, walk in shower with thermostatic shower attachments and glass shower door, fully tiled walls and an extractor fan.

The family bathroom is beautifully presented with fully tiled walls and a white suite comprising a pedestal wash hand basin, WC, panel bath with mixer tap over and hand held shower attachment, UPVC window and radiator.





Gardens & Grounds

To the front of the property is a small area of communal garden with low level hedging giving access to the front door of the flats with a security system.

To the rear of the property is a south facing and secluded communal garden with additional parking and garaging with power and lighting.

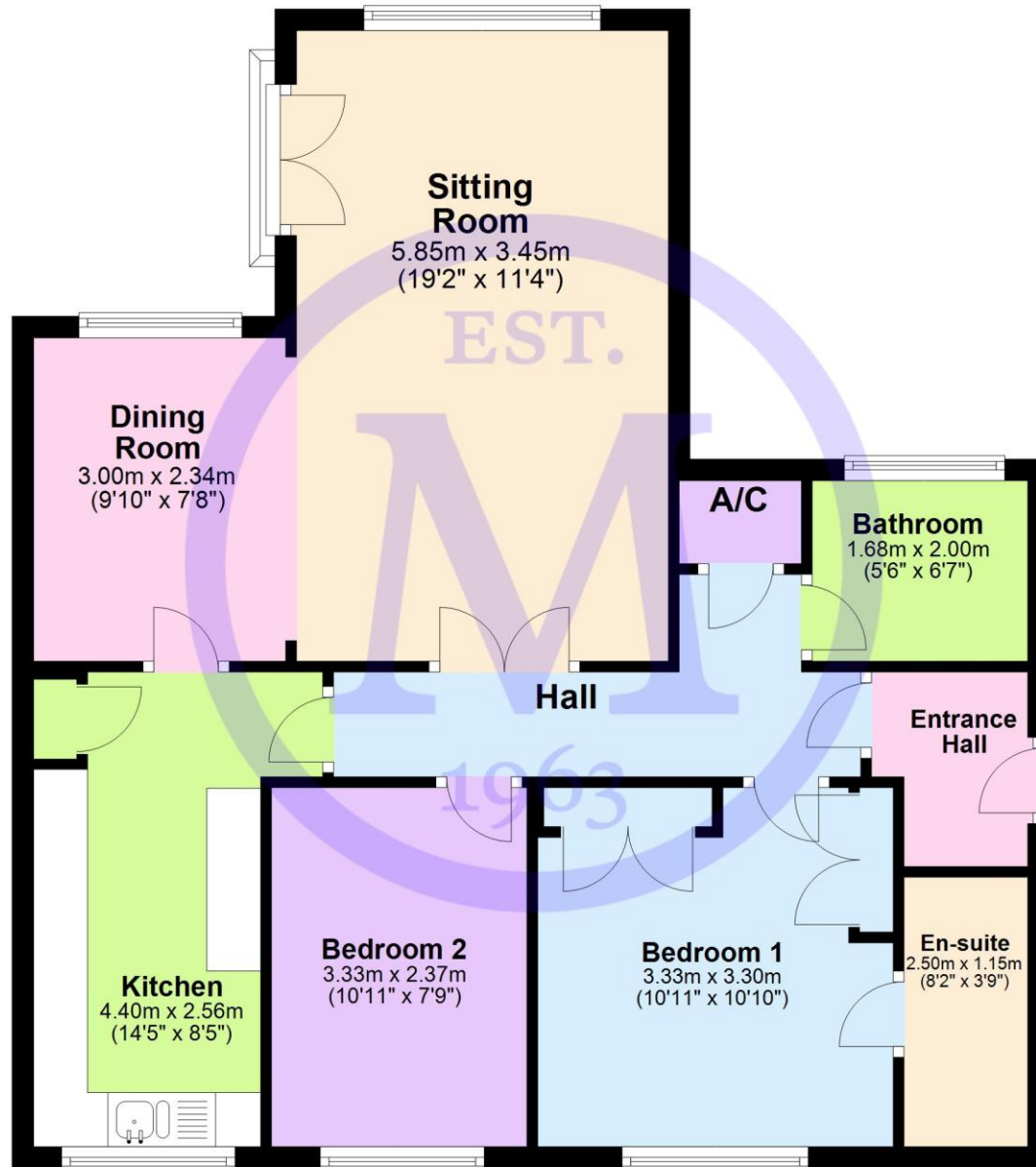
The property must be viewed to be fully appreciated.

Services

- Mains gas, electric, drainage and water
- Council Tax Band D
- Energy Performance Rating C

First Floor

Approx. 74.6 sq. metres (803.4 sq. feet)



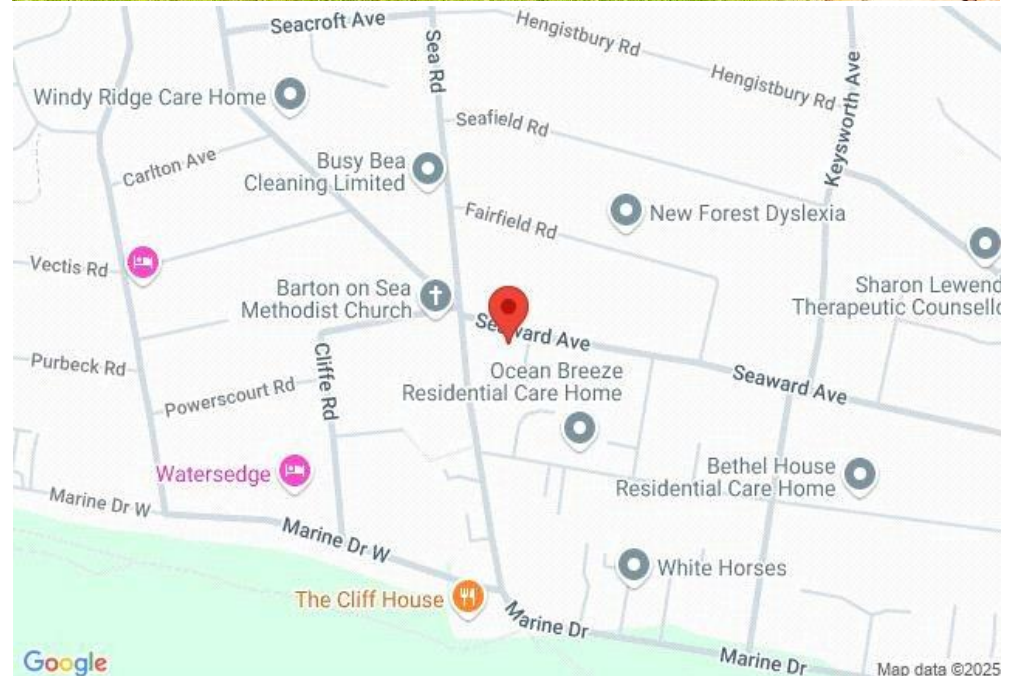
5 Draceana Court, 49 seaward Avenue, Barton On Sea

Situation

Barton on Sea is a suburb of New Milton and occupies an enviable position on a picturesque stretch of the Solent coastline with stunning views over Christchurch Bay to the Isle of Wight and beautiful coastal walks in both directions. Fuelled by its excellent location, the nearby open forest of the New Forest National Park, main line rail links to London Waterloo, quality schooling, luxury restaurants including the renowned Chewton Glen hotel and Pebble Beach on the cliff top, a links style 27 hole golf course, Barton on Sea is an extremely popular choice for those relocating to the coast.

Directions

From Mitchells turn right at the traffic lights and proceed down Station Road. Take the second turning right into Barton Court Road. Continue straight across at the traffic lights into Barton Court Avenue. Take the seventh turning right into Seaward Avenue where Draceana Court will be found near the end on the left hand side.





Mitchells.uk.com
info@mitchells.uk.com
01425 616411

Centenary Buildings
8-10 Old Milton Road
New Milton
Hampshire
BH25 6DT

Mitchells
1963 — TODAY

