



*"Palm Beach House" 2 Humphreys Bridge, Highcliffe on Sea, BH23 4HX £950,000*

**Mitchells**  
1963 — TODAY







# *Humphreys Bridge, Highcliffe on Sea*

An outstanding and luxuriously appointed coastal home of about 2560sqft just moments from the award winning beaches at Friars Cliff. Currently being used for high-end holiday rentals, no expense has been spared on the comprehensive refurbishment of this most stylish home. Strongly recommended. Boasting four large double bedrooms, all with their own luxury en-suites and also featuring stunning open plan living space with marble flooring, this property really has the WOW factor. The garden seamlessly links with the living space and enjoys a Tiki bar with ambient lighting allowing cool outside entertaining whilst the lawn is boarded by an ornamental stream. Set behind electric security gates and offered with no forward chain, this stunning home offers the very best in contemporary living. Please note the property is currently being used for holiday lettings so can be sold as an ongoing business and fully furnished if required.

- FOUR BEDROOMS • FOUR EN-SUITE BATH/SHOWER ROOMS • KITCHEN/DINER/FAMILY ROOM • UTILITY ROOM • LOUNGE • GARDENS • OFF-ROAD PARKING • FREEHOLD



## The Property

- Spacious detached home of about 2560sqft, right by the beach that has been professionally and comprehensively refurbished to the highest of standards
- Striking external elevations with complete privacy, secure parking and electric charging facility, outside store and landscaped gardens
- Fantastic master suite with large walk in dressing room and huge en-suite bathroom, three further double rooms all with en-suites
- Designer sanitary ware and tiling, high end kitchen with quartz worktops and quality integrated appliances
- Marble flooring to the ground floor with underfloor heating, controlled by a NEST system
- Spacious lounge with 'jack and jill' log burner that can be enjoyed from all the living space
- Re-wired, re-plumbed, Gas central heating and immaculate internal décor
- Highcliffe schools catchment area, walking of local shops, pubs, beach (dog friendly)
- Council Tax 'G' £3813.00
- EPC 'D'



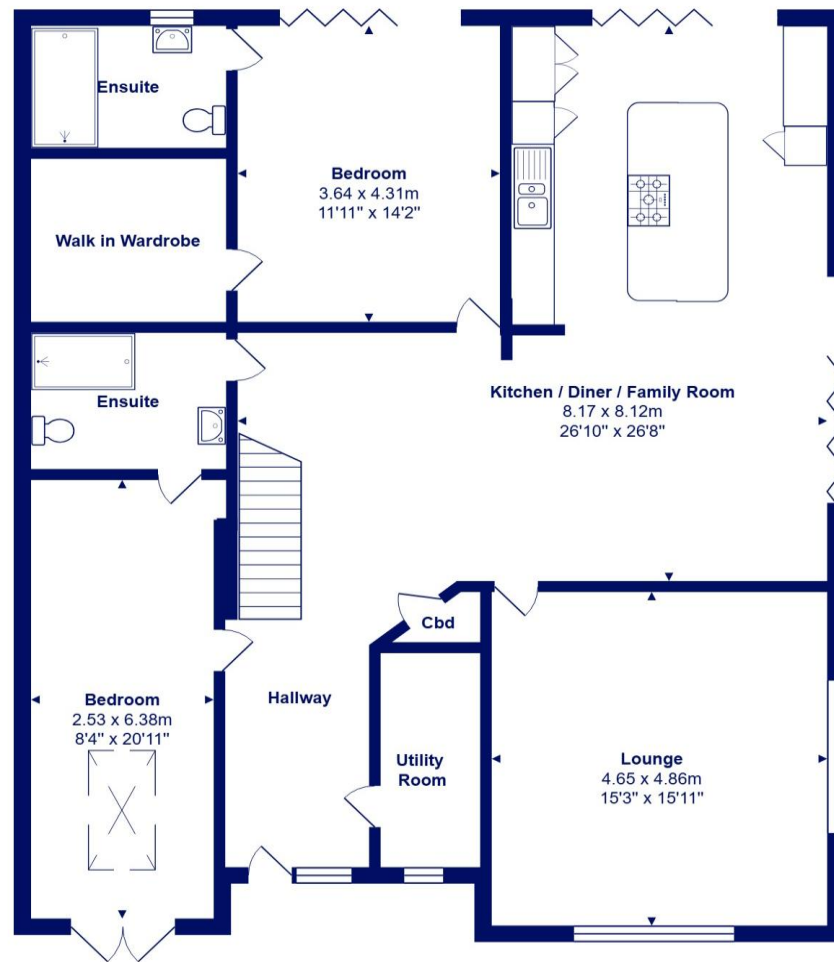




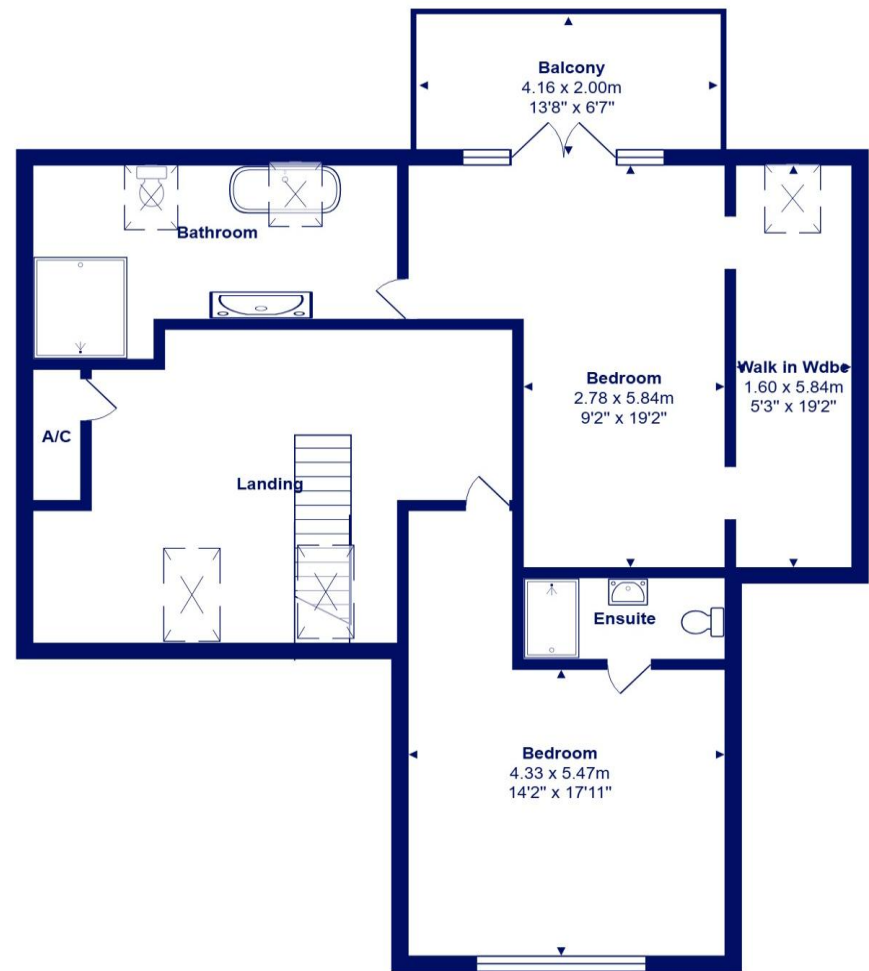
## Location

Highcliffe is a small village in the borough of Christchurch, Dorset. The village lies on a picturesque stretch of Solent coastline with views over Christchurch Bay to the Isle of Wight. Fuelled by its enviable location, coastal walks, main line railway links to London (in under two hours) excellent schools and the popularity of the Chewton Glen Hotel, the Highcliffe Golf Course and the Nature Reserve at Steamer Point, Highcliffe is a popular area for those relocating to the coast.





Ground Floor



First Floor



Total Area: 237.7 m<sup>2</sup> ... 2559 ft<sup>2</sup> (excluding balcony)  
 All measurements are approximate and for display purposes only











[mitchells.uk.com](http://mitchells.uk.com)  
[highcliffe@mitchells.uk.com](mailto:highcliffe@mitchells.uk.com)  
01425 272206

Highcliffe  
284 Lymington Road  
Highcliffe on Sea  
BH23 5EB

