



5 Foxcote Gardens, New Milton, BH25 5XD

£277,500

Mitchells
1963 — TODAY



*5 Foxcote Gardens
New Milton
Hampshire
BH25 5XD*

This beautifully presented two double bedroom family home is situated on popular Chatsworth Park and offers bright and modern accommodation with features including a spacious sitting/dining room, a generous master bedroom, a modern bathroom and a private and secluded south facing garden.

- Entrance Hall
- Kitchen
- Sitting/Dining Room
- First Floor Landing
- Two Bedrooms
- Family Bathroom
- Secluded Garden
- Two Allocated Parking Spaces



The Property

Entrance hall with stairs to first floor landing, electrical consumer unit, useful coats hooks and radiator.

The kitchen is fitted with a range of white shaker style wall and base units with a contrasting worktop, one and a half bowl sink with mixer tap over and drainer, four burner gas hob with tiled splashback and extractor fan over, tile effect flooring, a UPVC window giving an outlook over the front garden and space and plumbing for a washing machine and tall stand up fridge freezer.

The sitting/dining room is a particular feature of this property and is a generous room with a large UPVC window, a glazed door leading out to the patio and rear garden and an understairs storage cupboard.

First floor landing with slated balustrade, useful storage shelf and recess ceiling spotlights.

The master bedroom is a particularly good sized double room with two UPVC windows, recess ceiling spotlight and ample space for storage.

Bedroom two is situated at the front of the property with a walk in wardrobe, airing cupboard with slated shelving and hot water tank and a UPVC window to the front.

The family bathroom is fitted with a modern suite comprising a WC, wash hand basin with mixer tap over and storage beneath, panel bath with mixer tap over and hand held shower attachment, chrome heated towel rail, tiled effect flooring and fully tiled walls.





Gardens & Grounds

To the front of the property is a bin store, a block paviour path giving access via a picket gate with the rest of the garden laid to lawn with mature borders.

The rear garden is particularly well landscaped with a generous area of patio, pergola, storage shed, rear gate for access, an area of artificial grass for ease of maintenance and mature and colourful borders. The rear garden has a sunny southerly aspect catching the afternoon sun.

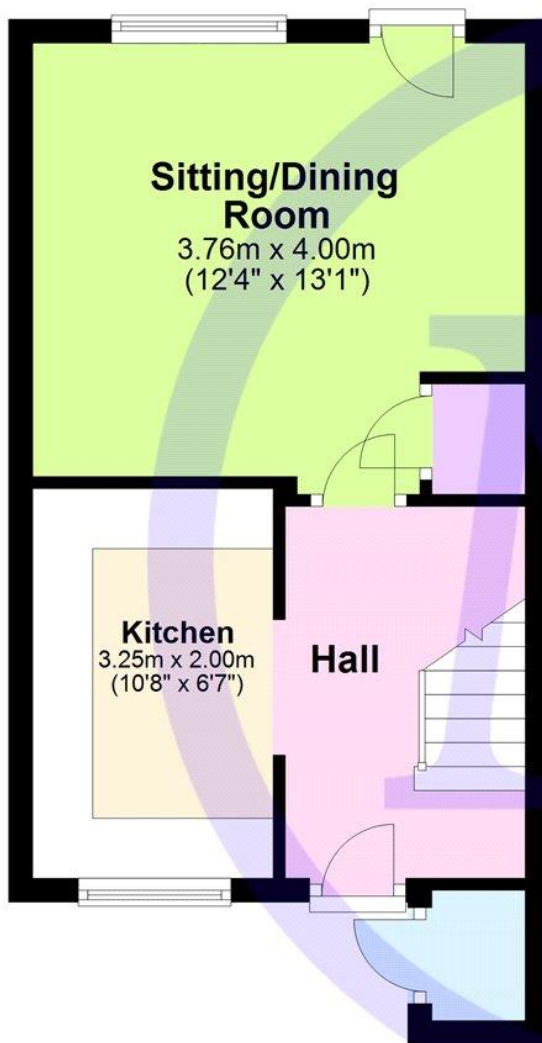
There is also an area of allocated parking just a few steps from the front door with two allocated spaces.

Services

- Mains gas, electric, drainage and water
- Council Tax Band C
- Energy Performance Rating C

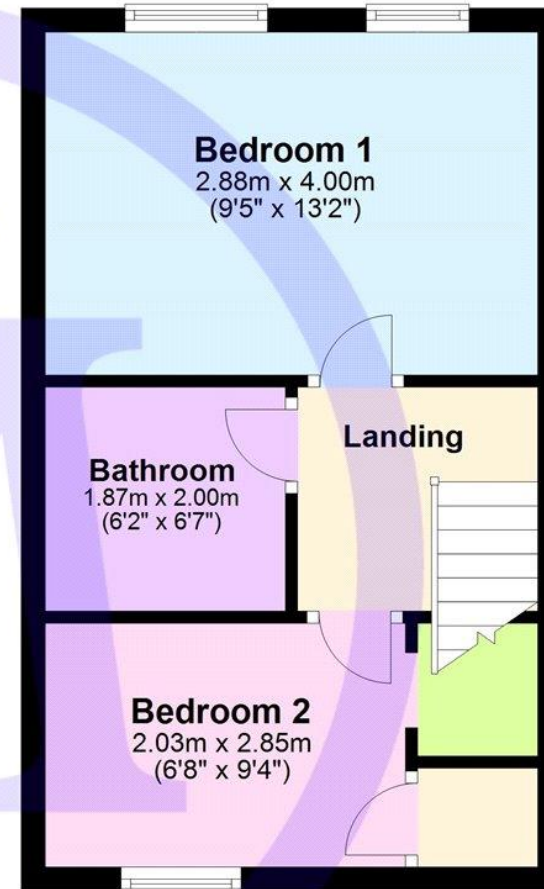
Ground Floor

Approx. 29.5 sq. metres (317.4 sq. feet)



First Floor

Approx. 28.7 sq. metres (308.4 sq. feet)



Total area: approx. 58.1 sq. metres (625.8 sq. feet)

'Whilst every attempt has been made to ensure the accuracy of this floor plan, the measurements of doors, windows, rooms and any other items are approximate and no responsibility is taken for any error, omission or mis-statement. This plan is for illustrative purposes only and should be used as such by any prospective purchaser.'

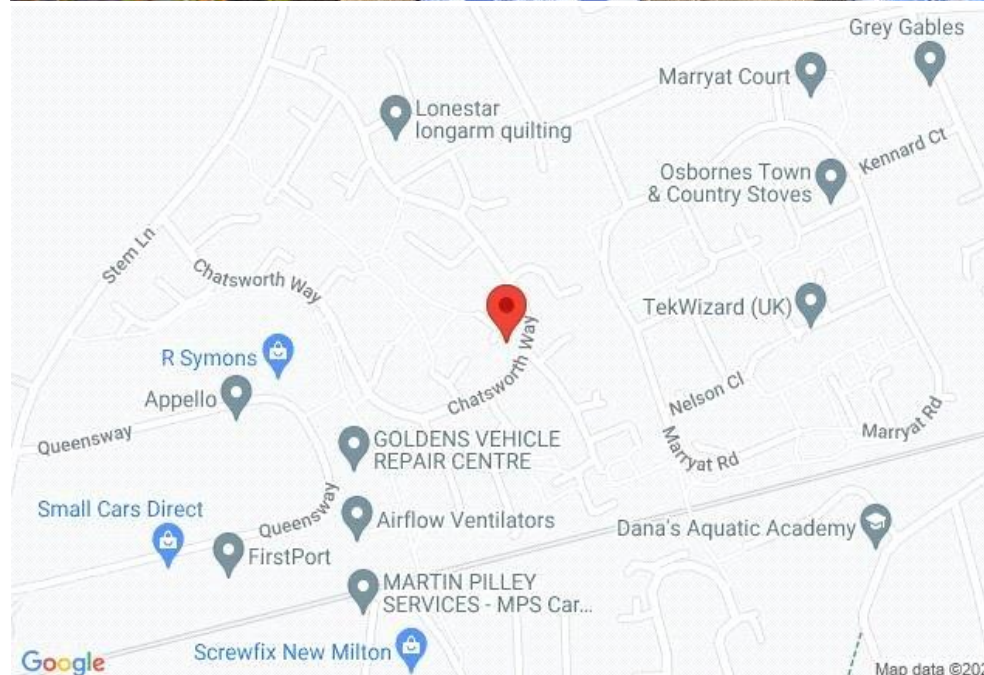
Plan produced using PlanUp.

Situation

New Milton is a thriving market town on the western edge of Hampshire. The area lies on a picturesque stretch of the Solent coastline with stunning views over Christchurch Bay to the Isle of Wight. With the enviable location, beautiful coastal walks, main line railway station reaching London Waterloo in less than two hours, excellent schools, both private and state, 27 hole links style golf course and the renowned Chewton Glen hotel, New Milton remains an extremely popular location for those relocating to the coast.

Directions

From Mitchells proceed along Old Milton Road, at the roundabout continue straight across and take the next turning right into Gore Road. After approximately half a mile turn right into Stem Lane, take the fourth turning right into Chatsworth Way, fourth right into Foxcote Gardens where the property will be seen immediately on the left hand side.





Mitchells.uk.com
info@mitchells.uk.com
01425 616411

Centenary Buildings
8-10 Old Milton Road
New Milton
Hampshire
BH25 6DT

Mitchells
1963 — TODAY

