



7 Beacon Drive, Highcliffe on Sea, BH23 5DH

£840,000

Mitchells
1963 — TODAY



Beacon Drive, Highcliffe on Sea

A stunning and stylish three/four bedroom detached family house of about 1900sqft, enviably located on the south side of Lymington Road, just a short stroll from both the High Street and Cliff Top. Benefitting from a lovely established and private rear garden, garage and ORP for five vehicles.

• FOUR BEDROOMS • TWO BATH/SHOWER ROOMS (ONE EN-SUITE) • KITCHEN/DINER • UTILITY ROOM • LOUNGE • STUDY • GF WC • SUMMERHOUSE • GARDEN WORKSHOP • GARDEN STORE • GARAGE • OFF-ROAD PARKING • GARDENS •



The Property

- Immaculate throughout
- Master bedroom with lovely ensuite
- Three further bedrooms
- Built-in wardrobes to all first floor bedrooms
- Very smart family bathroom
- Impressive hall with feature staircase
- Spacious landing with fitted Study area and storage
- Ground floor bedroom four/study
- Stunning, approx 12 x 24ft, kitchen/diner with stylish units and quartz tops
- Separate utility room
- Magnificent large sitting room
- Ground floor cloakroom
- Upvc double glazing and gas central heating
- Summerhouse, garden workshop and garden store, all with light and power
- Single garage plus plenty of off-road parking
- Council Tax 'F' £3304.60
- EPC 'D'

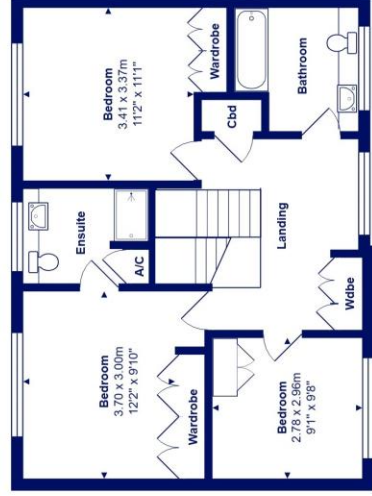
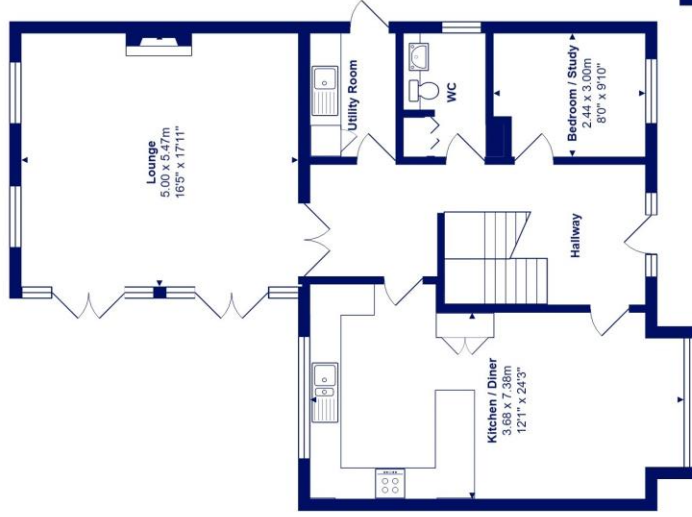
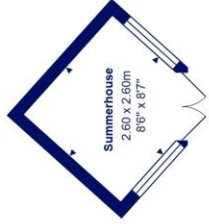
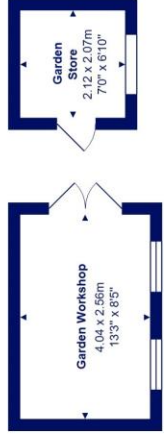




Location

Highcliffe is a small village in the borough of Christchurch, Dorset. The village lies on a picturesque stretch of Solent coastline with views over Christchurch Bay to the Isle of Wight. Fuelled by its enviable location, coastal walks, main line railway links to London (in under two hours) excellent schools and the popularity of the Chewton Glen Hotel, the Highcliffe Golf Course and the Nature Reserve at Steamer Point, Highcliffe is a popular area for those relocating to the coast.





Total Area: 173.4 m² ... 1867 ft² (excluding garden room, store)
All measurements are approximate and for display purposes only





mitchells.uk.com
highcliffe@mitchells.uk.com
01425 272206

Highcliffe on Sea
284 Lymington Road
Highcliffe on Sea
BH23 4TH

