



SHELDRAKE ROAD, MUDEFORD, BH23 4BP

Mitchells
1963 — TODAY



SHELDRAKE ROAD, MUDEFORD, DORSET BH23 4BP

A substantial detached chalet of nearly 1800 sq ft, featuring fantastic open plan living accommodation with bifold doors, generous master bedroom suite and three luxurious bath/shower rooms. This lovely home benefits from an integral garage, driveway parking for multiple cars and a beautifully landscaped rear garden. Enviably situated in this superb pocket of Mudeford, moments from Avon Beach and Mudeford Quay.

THREE/FOUR BEDROOMS • THREE BATH/SHOWER ROOMS (one en-suite, one ground floor) • LARGE KITCHEN/DINING/FAMILY ROOM SEPARATE LOUNGE • UTILITY ROOM • GARDEN GARAGE • OFF ROAD PARKING



The Property

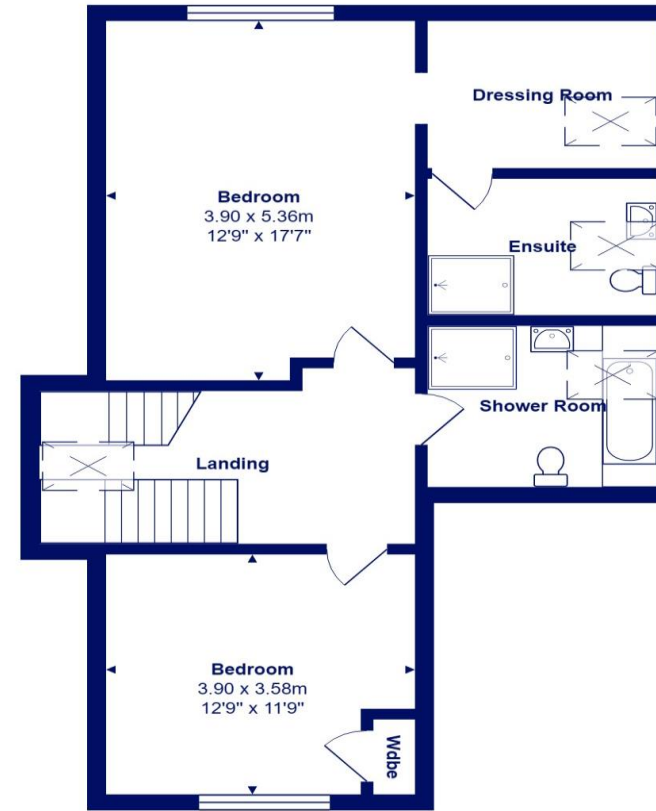
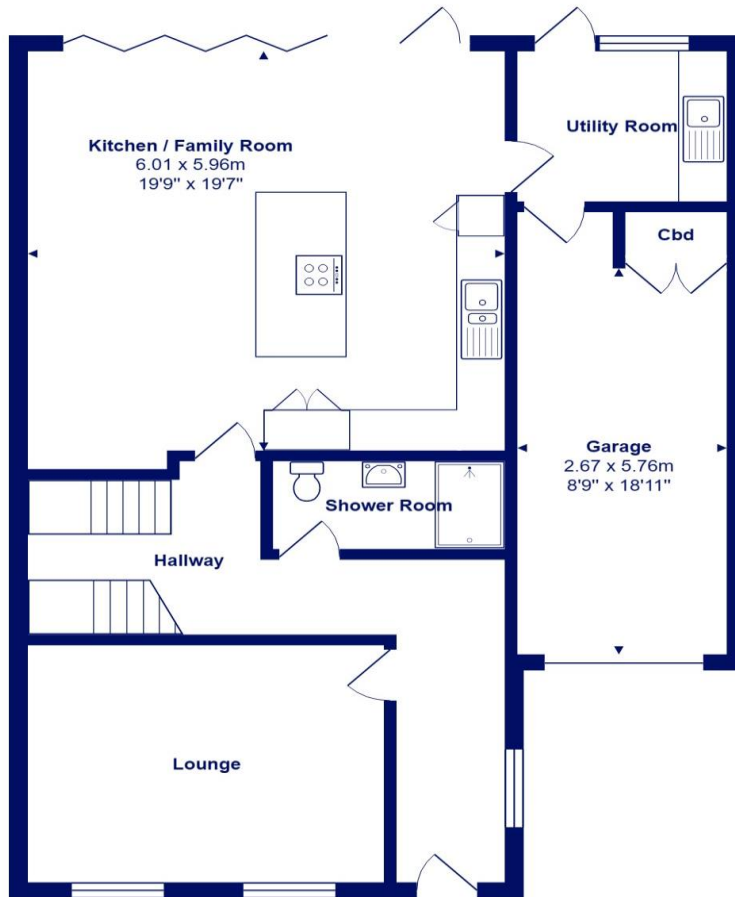
- Substantial detached three bedroom chalet In sought after location
- Spacious rooms with quality floor coverings
- Stylish, open plan kitchen/living space
- Master bedroom with dressing room and en-suite
- Three designer bath/shower rooms with luxurious ceramics
- New gas fired central heating, uPVC double glazing, Internal doors and wiring
- Landscaped garden with sun terrace
- Driveway parking for several vehicles
- Short stroll to the beach, local shops and award winning pubs and restaurants
- Council Tax Band 'D' - £2093.92
- EPC rating 'C'





Location

Mudford began as a small fishing village close to the entrance of Christchurch Harbour which still sees fishing boats landing their catch today. The area enjoys award winning sandy beaches at Avon beach and plenty of wildlife activity on Hengistbury Head and Stanpit Marsh Nature Reserve. The popular Mudford Sandbank attracts visitors every year to the private beach huts with the Harbour providing a sheltered environment for watersports activities. With a friendly, community feel, it is no wonder Mudford is becoming a popular choice for relocation.



First Floor

Ground Floor



Total Area: 149.0 m² ... 1604 ft² (excluding garage)
All measurements are approximate and for display purposes only







mitchells.uk.com

mundeford@mitchells.uk.com

01202 499295

Mundeford

Cambridge House

112-114 Stanpit

BH23 3ND

