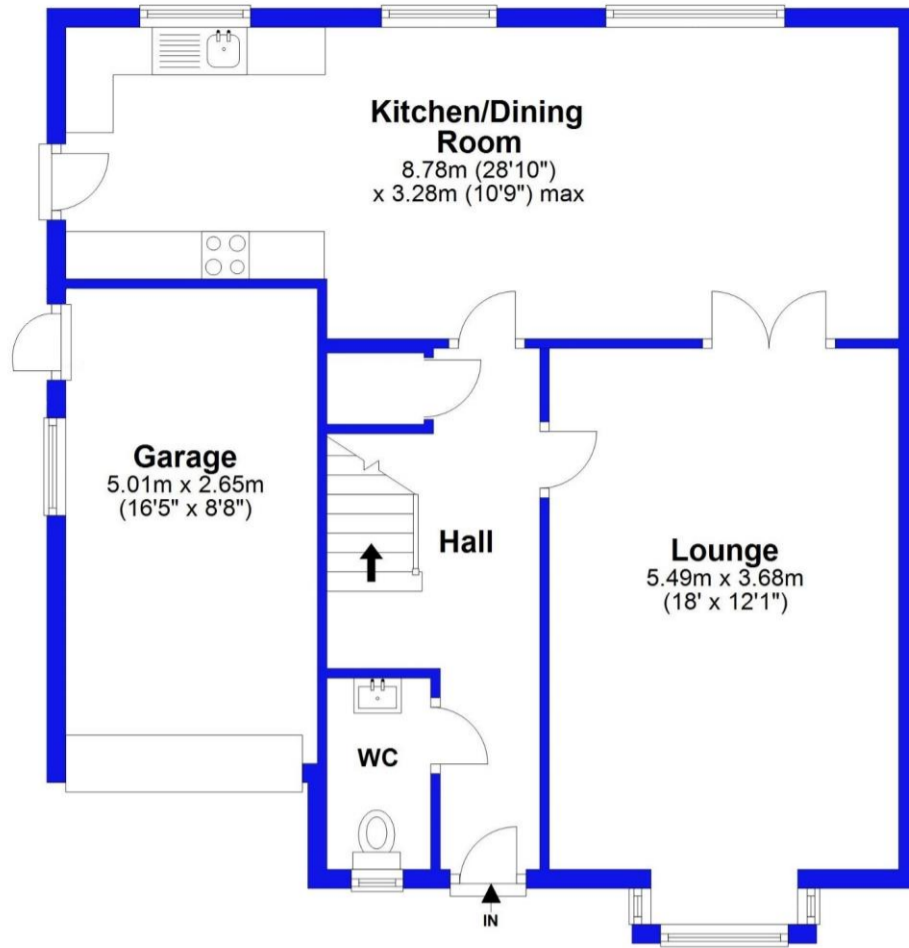


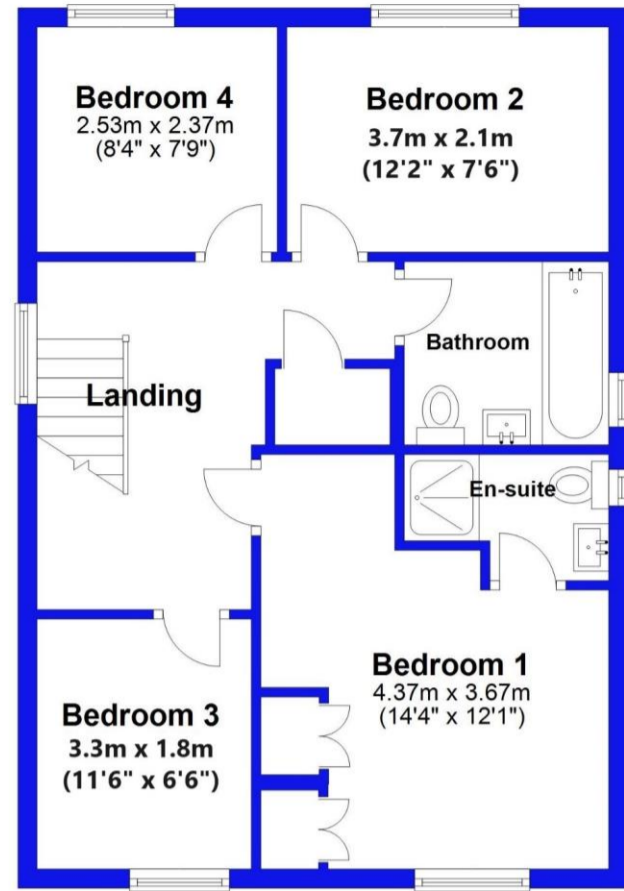
Ground Floor

Approx. 75.7 sq. metres (815.2 sq. feet)



First Floor

Approx. 53.5 sq. metres (575.7 sq. feet)



Total area: approx. 129.2 sq. metres (1390.9 sq. feet)

Illustration for identification purposes only; measurements are approximate, not to scale. EPC New Forest Plan produced using PlanUp.



22 Cornflower Drive, Highcliffe On Sea, BH23 4UH

£585,000

Mitchells

1963 — TODAY

A pristine, detached family home of about 1400sqft, built by Hoburne Developments featuring a high quality specification with contemporary fittings, designer bathrooms and a lovely landscaped garden. Walking distance of the local Saulfland shops and Sainsbury's superstore with its excellent bus route connections.

- Immaculate home on sought after development
- Master bedroom with fitted wardrobes & en-suite shower room
- Three further bedrooms
- Two stylish bath/shower rooms with tiling by Porcelanosa
- Ground floor wc
- Fabulous open plan kitchen/dining room with Tufftex flooring
- Separate sitting room with double doors to the kitchen
- Solar panels for hot water, gas central heating, UPVC double glazing
- Garage and off road parking
- Council Tax 'E' £2658.58
- EPC 'B'

