



CAROLINE AVENUE, MUDEFORD, DORSET BH23 3JR

Mitchells
1963 — TODAY



CAROLINE AVENUE, MUDEFORD, DORSET BH23 3JR

A stunning detached chalet of over 1900 sq.ft offering spacious and versatile accommodation and presented in first class order throughout. Featuring a beautiful kitchen, open plan living space, generous room sizes and a sunny, private rear garden, this lovely home is situated just moments from Fisherman's bank, Stanpit Marsh, Avon Beach and Mudeford Quay. Viewing is advised to truly appreciate the accommodation on offer.

**FOUR/FIVE BEDROOMS • THREE BATH/SHOWER ROOMS • KITCHEN/BREAKFAST ROOM
LOUNGE/DINER • UTILITY ROOM • GARDEN • GARAGE • OFF ROAD PARKING**



The Property

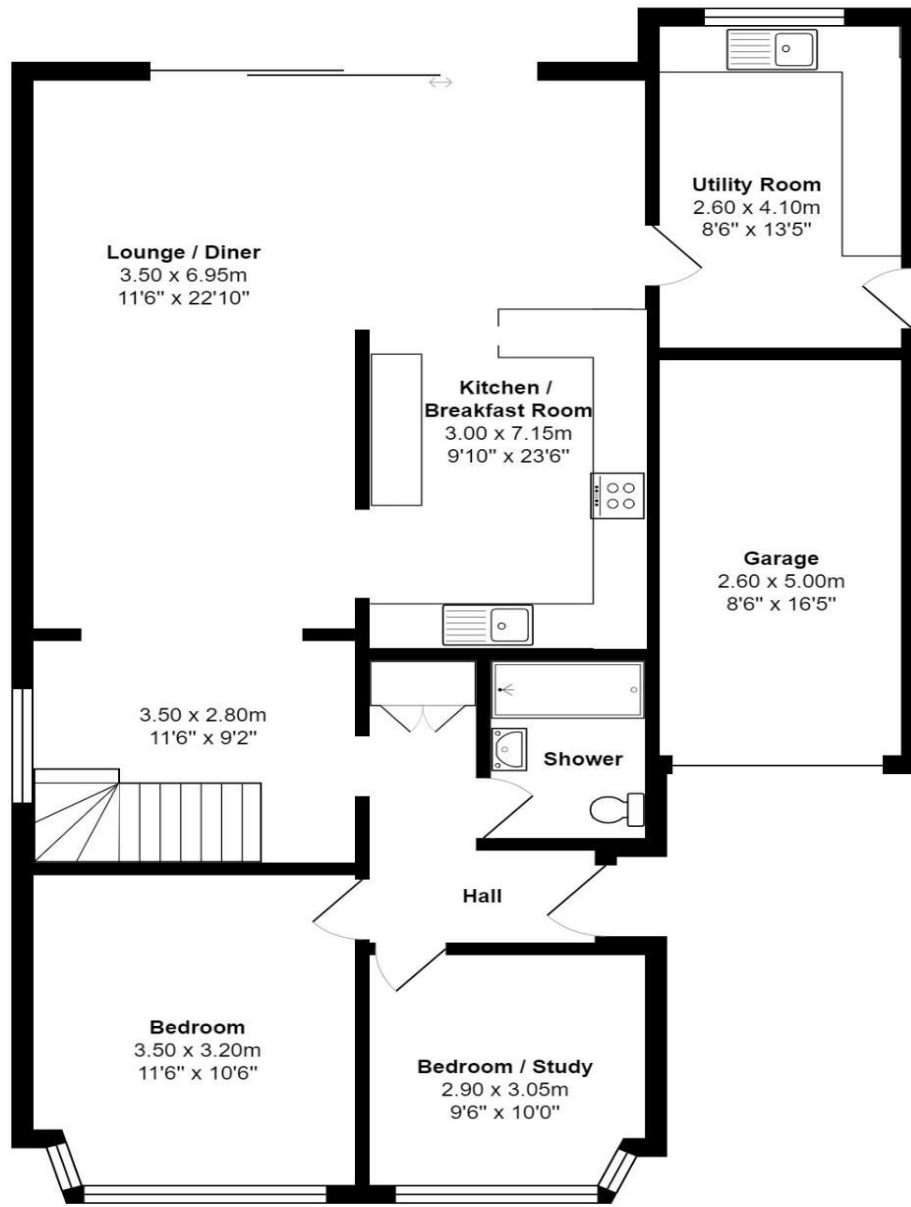
- Impressive detached chalet of 1932 sq.ft
- Three first floor bedrooms
- Three bath/shower rooms (one ensuite)
- Stunning, open plan living space with sliding doors onto the patio
- Large utility room with access to the side garage
- Separate playroom/snug/bedroom four
- Ground floor office/bedroom five
- Private, low maintenance rear garden with plenty of storage and side access
- Integral garage and off road parking for several vehicles
- Situated in an enviable location just a short walk to Fisherman's Bank and Stanpit Marsh
- Council Tax Band 'D' - £2217.98
- EPC rating 'C'



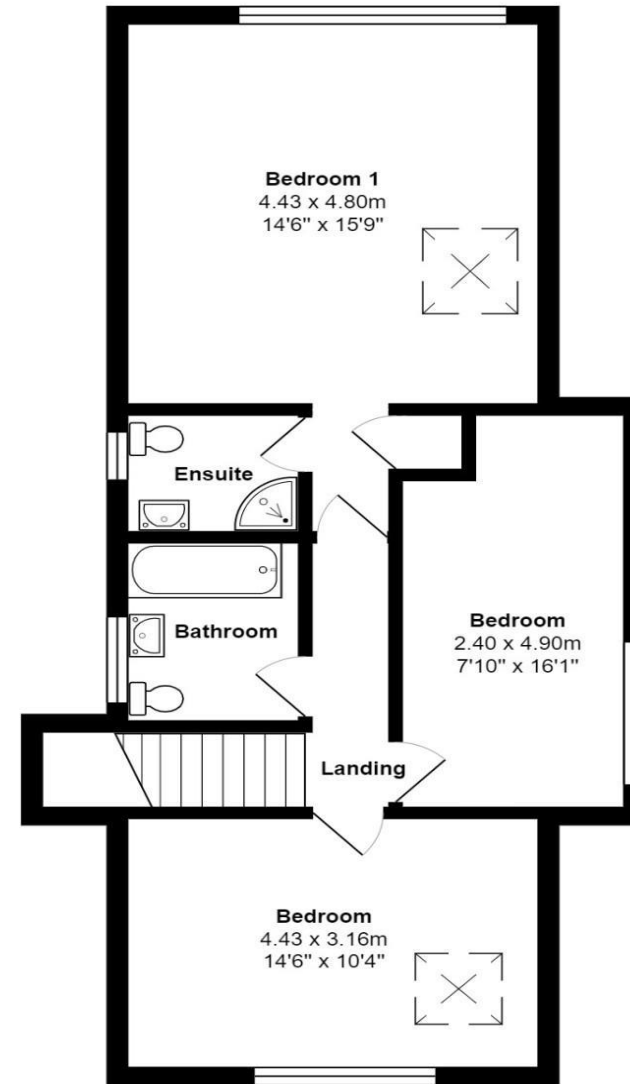


Location

Mudford began as a small fishing village close to the entrance of Christchurch Harbour which still sees fishing boats landing their catch today. The area enjoys award winning sandy beaches at Avon beach and plenty of wildlife activity on Hengistbury Head and Stanpit Marsh Nature Reserve. The popular Mudford Sandbank attracts visitors every year to the private beach huts with the Harbour providing a sheltered environment for water-sports activities. With a friendly, community feel, it is no wonder Mudford is becoming a popular choice for relocation.



Ground Floor



First floor

Total Area: 179.5 m² ... 1932 ft²





mitchells.uk.com

mundeford@mitchells.uk.com

01202 499295

Mundeford

Cambridge House

112-114 Stanpit

BH23 3ND

