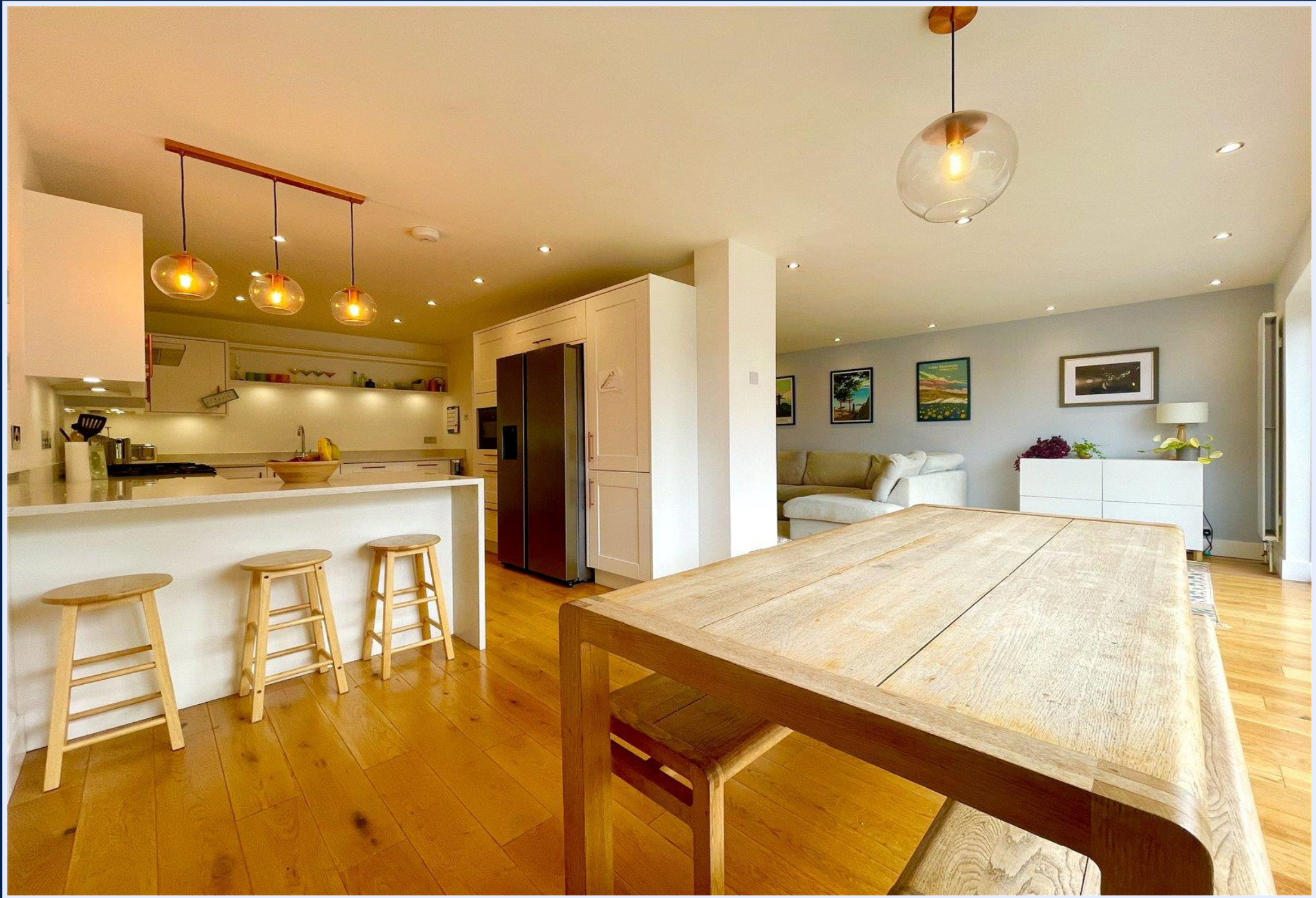


5 CAROLINE AVENUE
MUDEFORD, BH23 3JR





5 CAROLINE AVENUE

A stunning detached chalet of over 1900 sqft offering spacious and versatile accommodation and presented in first class order throughout. Featuring a beautiful kitchen, open plan living space, generous room sizes and a sunny, private rear garden, this lovely home is situated just moments from Fisherman's bank, Stanpit Marsh, Avon Beach and Mudeford Quay. Viewing is advised to truly appreciate the accommodation on offer.

FOUR/FIVE BEDROOMS • THREE BATH/SHOWER ROOMS (ONE EN-SUITE) • KITCHEN/BREAKFAST ROOM • UTILITY ROOM • LOUNGE/DINER • STUDY/BEDROOM FIVE • GARDENS • GARAGE • OFF-ROAD PARKING •



The Property

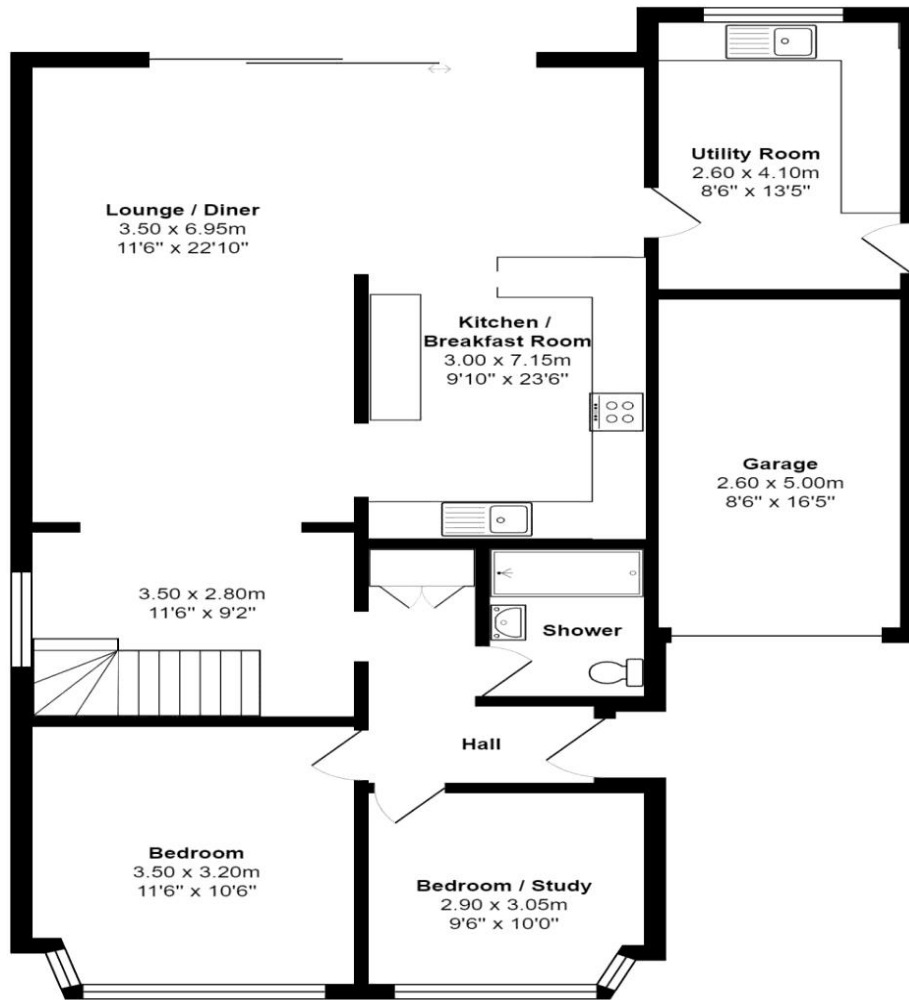
- Impressive detached chalet of 1932 sq.ft.
- Three first floor bedrooms
- Three bath / shower rooms (one en-suite)
- Stunning, open plan living space with sliding doors onto the patio
- Large utility room with access to the side and garage
- Separate playroom / snug / bedroom four
- Ground floor office / bedroom five
- Private, low maintenance rear garden with plenty of storage and side access
- Integral Garage and off road parking for several vehicles
- Situated in an enviable location just a short walk to Fishermans Bank and Stanpit Marsh
- Council Tax 'D' £1991.62
- EPC 'C'



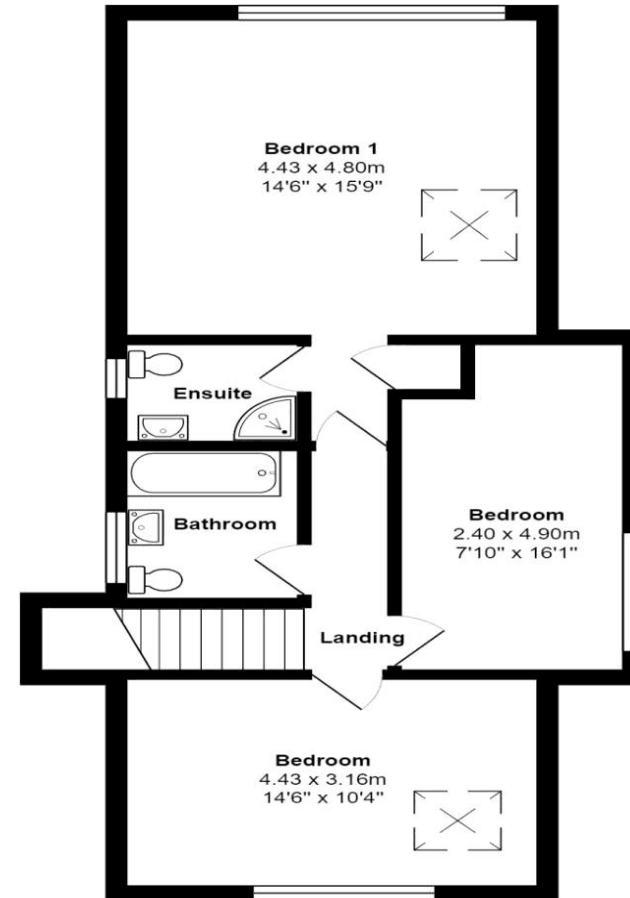


Location

Mudford began as a small fishing village close to the entrance of Christchurch Harbour which still sees fishing boats landing their catch today. The area enjoys award winning sandy beaches at Avon beach and plenty of wildlife activity on Hengistbury Head and Stanpit Marsh Nature Reserve. The popular Mudford Sandbank attracts visitors every year to the private beach huts with the Harbour providing a sheltered environment for watersports activities. With a friendly, community feel, it is no wonder Mudford is becoming a popular choice for relocation.



Ground Floor

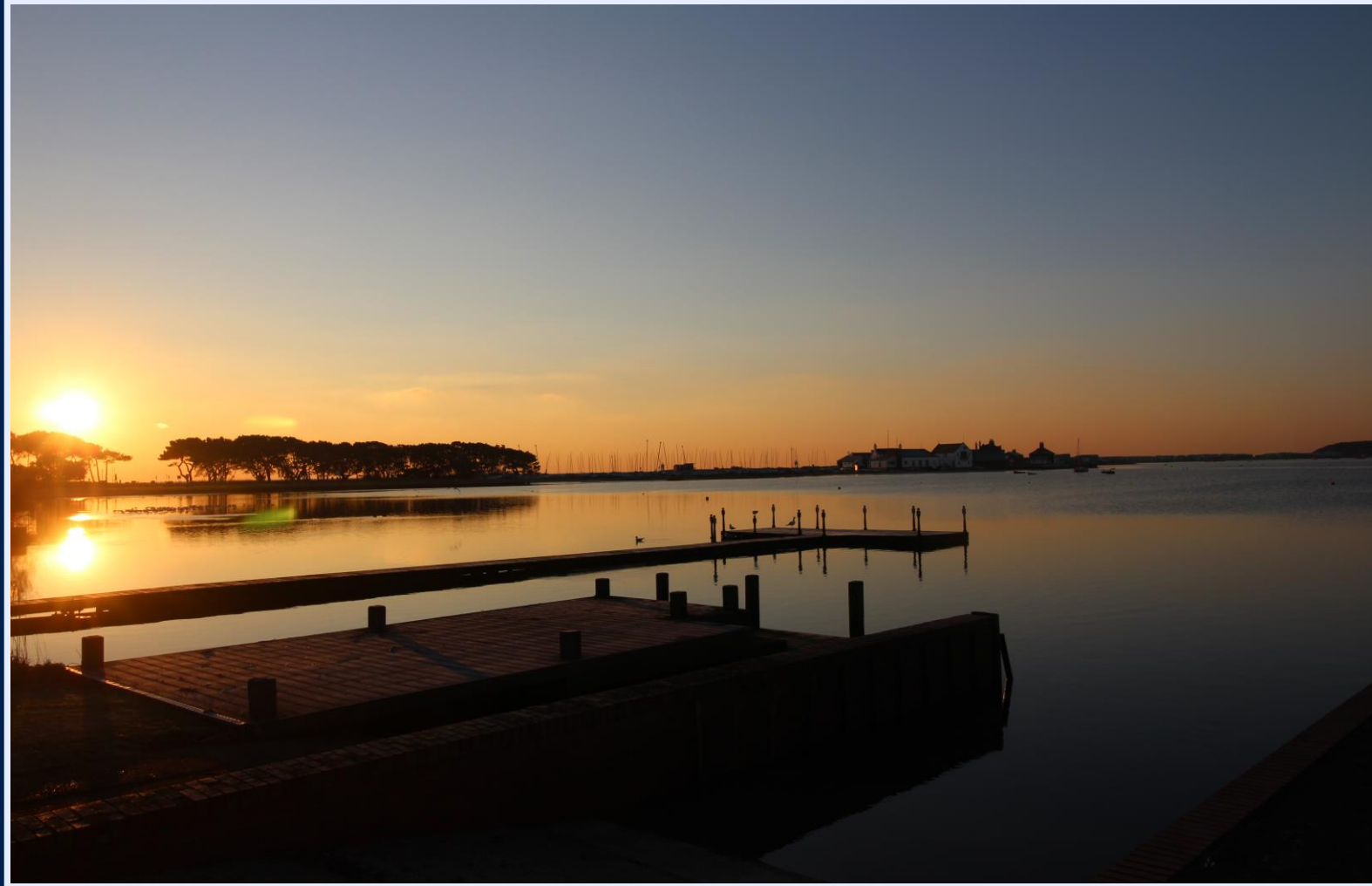


First floor

Total Area: 179.5 m² ... 1932 ft²

All measurements are approximate and for display purposes only





Cambridge House, 112-114 Stanpit, Christchurch, Dorset, mundeford@mitchells-estateagents.co.uk

01202 499295

mitchells.uk.com