

77 ROWAN DRIVE
HIGHCLIFFE ON SEA, BH23 4SH





ROWAN DRIVE, HIGHCLIFFE ON SEA

A smart and stylish, extended and fully refurbished three bedroom semi-detached house, offering spacious living space of approx 1165sqft, the extended ground floor accommodation is of a fantastic size and is a particular feature of this superb property with direct access onto the rear south facing garden. In the last few years, the property has been skilfully refurbished from top to bottom by the current owners creating a fabulous home. The property is ideally located in the heart of Highcliffe and within easy walking distance of the local shops at Saulflands, Highcliffe schools, Nea Meadows Nature Reserve and the beaches a little further beyond.

- THREE BEDROOMS • BATHROOM • KITCHEN • LOUNGE/DINER • GF WC • GARDENS • GARAGE •



The Property

- Three double bedrooms, two with fitted wardrobes
- Large fully tiled family bathroom with shower over
- Newly fitted contemporary kitchen with integrated appliances
- Stylish large family lounge/dining room with two sets of doors onto the rear garden
- Front covered porch with utility space
- Ground floor wc
- A lovely private South facing rear garden with a large area of decking ideal for entertaining, easily maintained lawn and steps down to a second area of garden
- Single garage in a nearby block
- Excellent location close to local schools, shops and beaches a little further beyond, Sainsbury's superstore with its excellent bus connections is close-by
- Council Tax £2071.06
- EPC 'D'

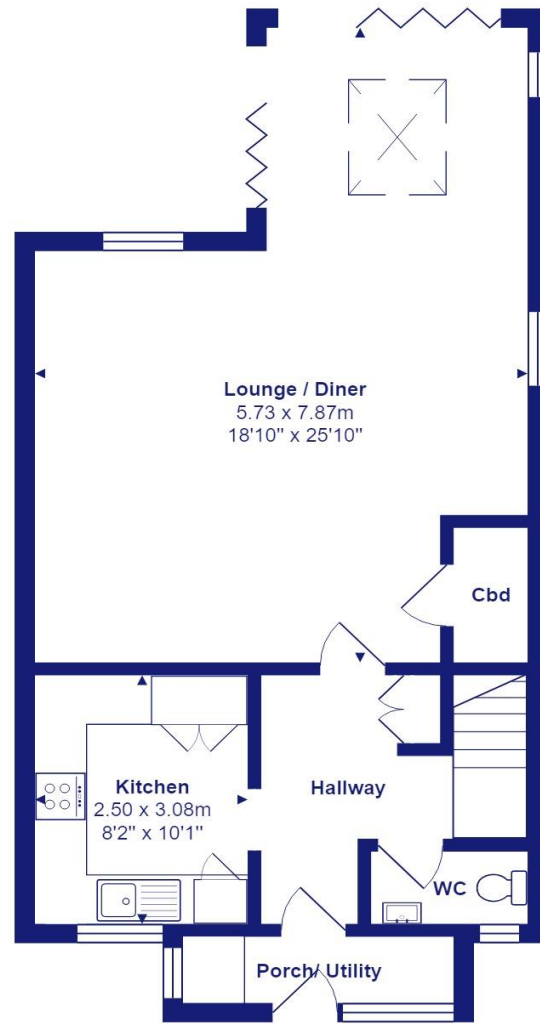




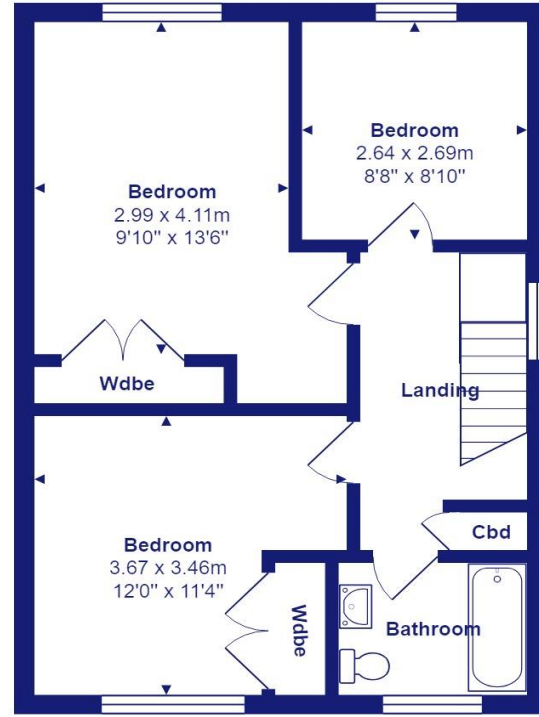
Location

Highcliffe is a small village in the borough of Christchurch, Dorset. The village lies on a picturesque stretch of Solent coastline with views over Christchurch Bay to the Isle of Wight. Fuelled by its enviable location, coastal walks, main line railway links to London (in under two hours) excellent schools and the popularity of the Chewton Glen Hotel, the Highcliffe Golf Course and the Nature Reserve at Steamer Point, Highcliffe is a popular area for those relocating to the coast.





Ground Floor



First Floor



Total Area: 108.2 m² ... 1164 ft²

All measurements are approximate and for display purposes only







284 Lymington Road, Highcliffe on Sea, Christchurch, Dorset, BH23 5ET highcliffe@mitchells-estateagents.co.uk

01425 272206

mitchells.uk.com