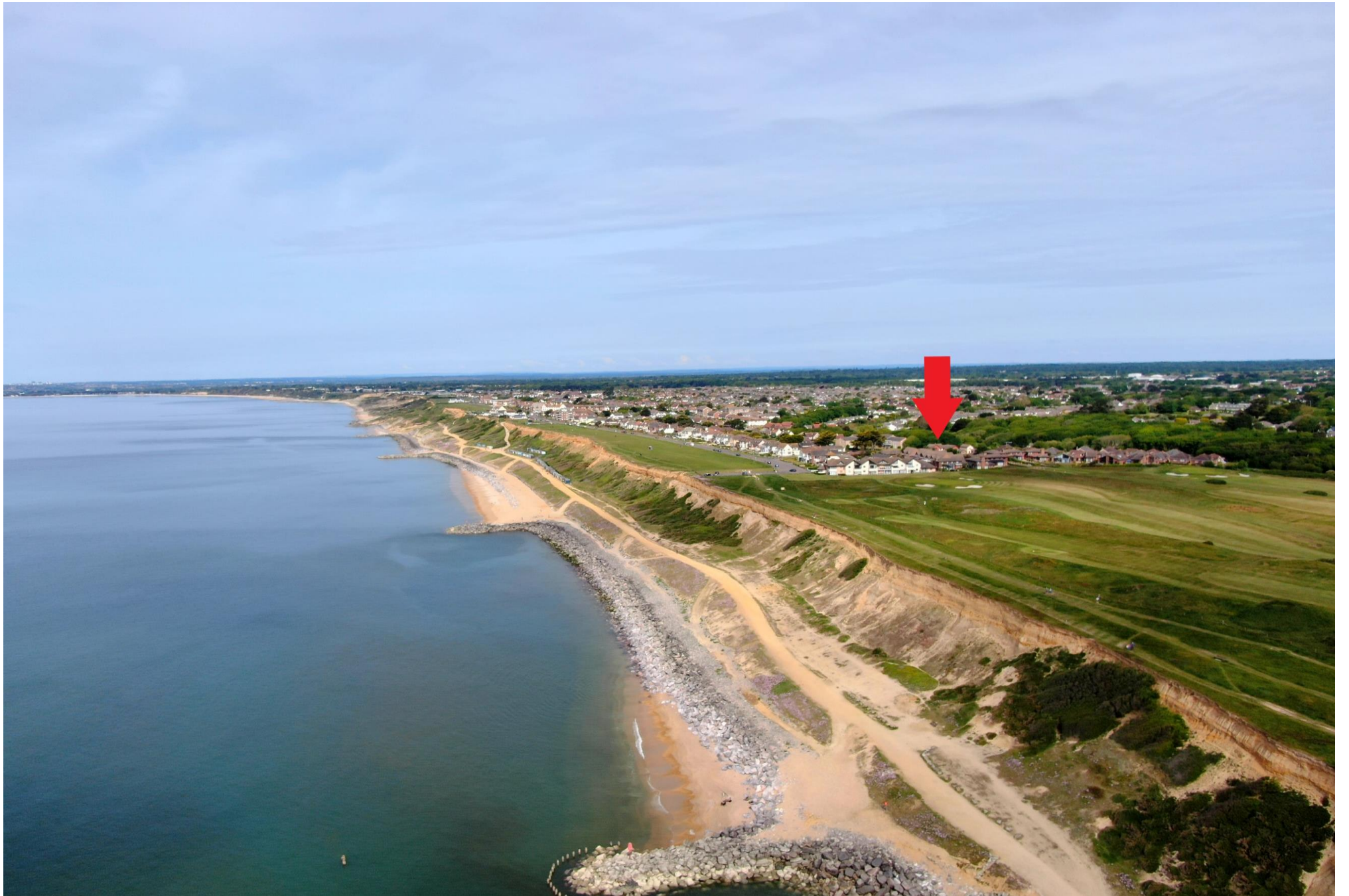




26 Barton Green, Barton On Sea, BH25 7LZ

£269,950

Mitchells
1963 — TODAY



*26 Barton Green
Barton On Sea
New Milton
BH25 7LZ*

A stylish self-contained two double bedroom ground floor apartment situated on the prestigious Barton Green development adjoining Barton on Sea golf course within only a few steps of the clifftop and beach. This high quality apartment would be ideal as a secure lock up and leave and benefits from a good sized private patio enjoying an ornamental pond, an impressive split level sitting/dining room, an en-suite shower room to the master bedroom, a car port, beautiful communal gardens and is offered with the added benefit of no joining fee for the exclusive Barton on Sea links golf club and no forward chain.

- Entrance Hall
- Split Level Sitting/Dining Room
- Private Patio
- Kitchen
- Two Double Bedrooms
- Bathroom
- En-Suite Shower Room
- Car Port
- Visitor Parking
- Communal Gardens



The Property

Entrance hall with attractive timber effect flooring, glazed front door, utility cupboard and airing cupboard housing the Megaflo hot water cylinder.

Impressive double aspect split level sitting/dining room with handsome fire surround with stone backing and hearth and impressive full height glazing taking full advantage of the sunny aspect and beautiful outlook.

Double glazed sliding doors lead onto the private patio which takes full advantage of the sunny aspect and has a lovely outlook.

Kitchen fitted with a range of white wall and base units with contrasting dark worktops and an inset 1 ½ bowl sink unit with mixer tap over, wall mounted gas fired boiler, integrated double electric oven, four burner gas hob, extractor fan, fridge and separate freezer, glass fronted display cabinets, under cupboard lighting, tile flooring and an outlook to the front.

Two double bedrooms both with built in wardrobes.

En-suite shower room to the master bedroom comprising of a fully tiled shower cubicle, wash basin with storage beneath and WC.

Bathroom fitted with a white suite comprising of a panel bath with a mixer tap and shower attachment over, wash basin, WC, bidet, tile flooring and extractor fan.

Gas fired central heating and UPVC double glazing.

Internal viewing strongly recommended.

Share of freehold.

Maintenance approximately £2,400 per annum.





Gardens & Grounds

Barton Green stands in its own immaculately presented communal gardens, the upkeep of which is provided for out of the annual maintenance. The property benefits from a private car port, outside refuse store and visitor parking.

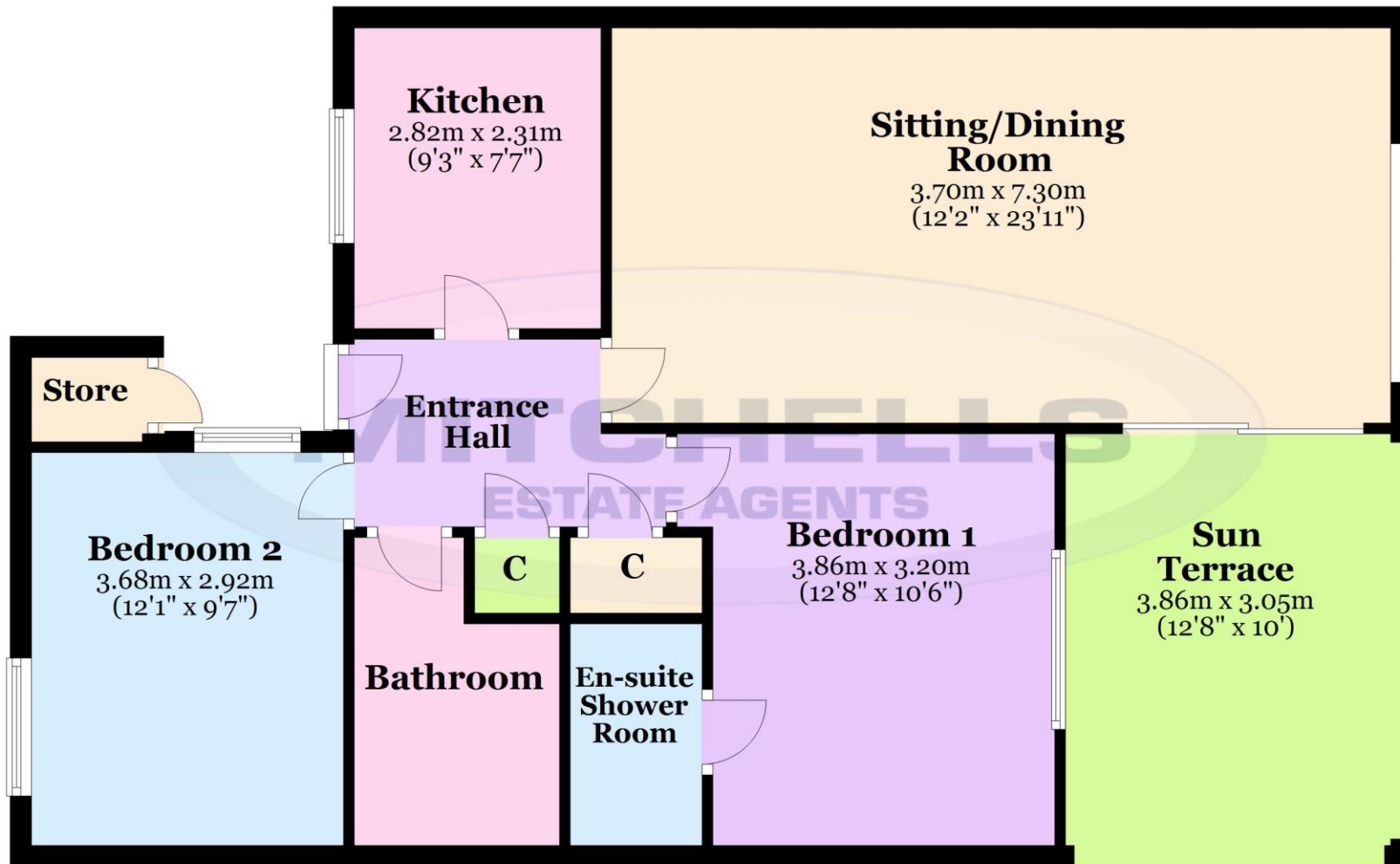
Services

- Mains gas, electric, drainage and water
- Council Tax Band E
- Energy Performance Rating C



Floor Plan

Approx. 86.4 sq. metres (930.1 sq. feet)



Total area: approx. 86.4 sq. metres (930.1 sq. feet)

'Whilst every attempt has been made to ensure the accuracy of this floor plan, the measurements of doors, windows, rooms and any other items are approximate and no responsibility is taken for any error, omission or mis-statement. This plan is for illustrative purposes only and should be used as such by any prospective purchaser.'

Plan produced using PlanUp.

26 Barton Green, Barton on Sea, New Milton

Situation

Barton on Sea is a suburb of New Milton and occupies an enviable position on a picturesque stretch of the Solent coastline with stunning views over Christchurch bay to the Isle of Wight and beautiful coastal walks in both directions. Fuelled by its excellent location, the nearby open forest of the New Forest National Park, main line rail links to London Waterloo, quality schooling, luxury restaurants including the renowned Chewton Glen hotel and Pebble Beach on the cliff top, a links style 27 hole golf course Barton on Sea is an extremely popular choice for those relocating to the coast.

Directions

From Mitchells turn right at the traffic lights and proceed along Old Milton Road, at the roundabout turn right onto Lymington Road and take the second turning turn left into Becton Lane, at the junction continue straight ahead, also Becton Lane, take the second turning left into Barton Green, bear round to the left where the property will be found on the right hand side.



Mitchells.uk.com
info@mitchells.uk.com
01425 616411

Centenary Buildings
8-10 Old Milton Road
New Milton
Hampshire
BH25 6DT

Mitchells
1963 — TODAY

