



SEATON ROAD, HIGHCLIFFE ON SEA, DORSET

Mitchells
1963 — TODAY



An immaculate and recently built, detached bungalow of quite some style and quality located right in the heart of the village centre with a gorgeous garden and just moments from the bustling high street and beach

This super home features about 735 sq ft of luxury living space with top quality fittings, lovely open plan living space and a beautifully stocked south facing garden.

TWO DOUBLE BEDROOMS • TWO BATHROOMS (ONE EN-SUITE)

SPACIOUS KITCHEN/LIVING AREA

GARDEN

OFF ROAD PARKING



The Property

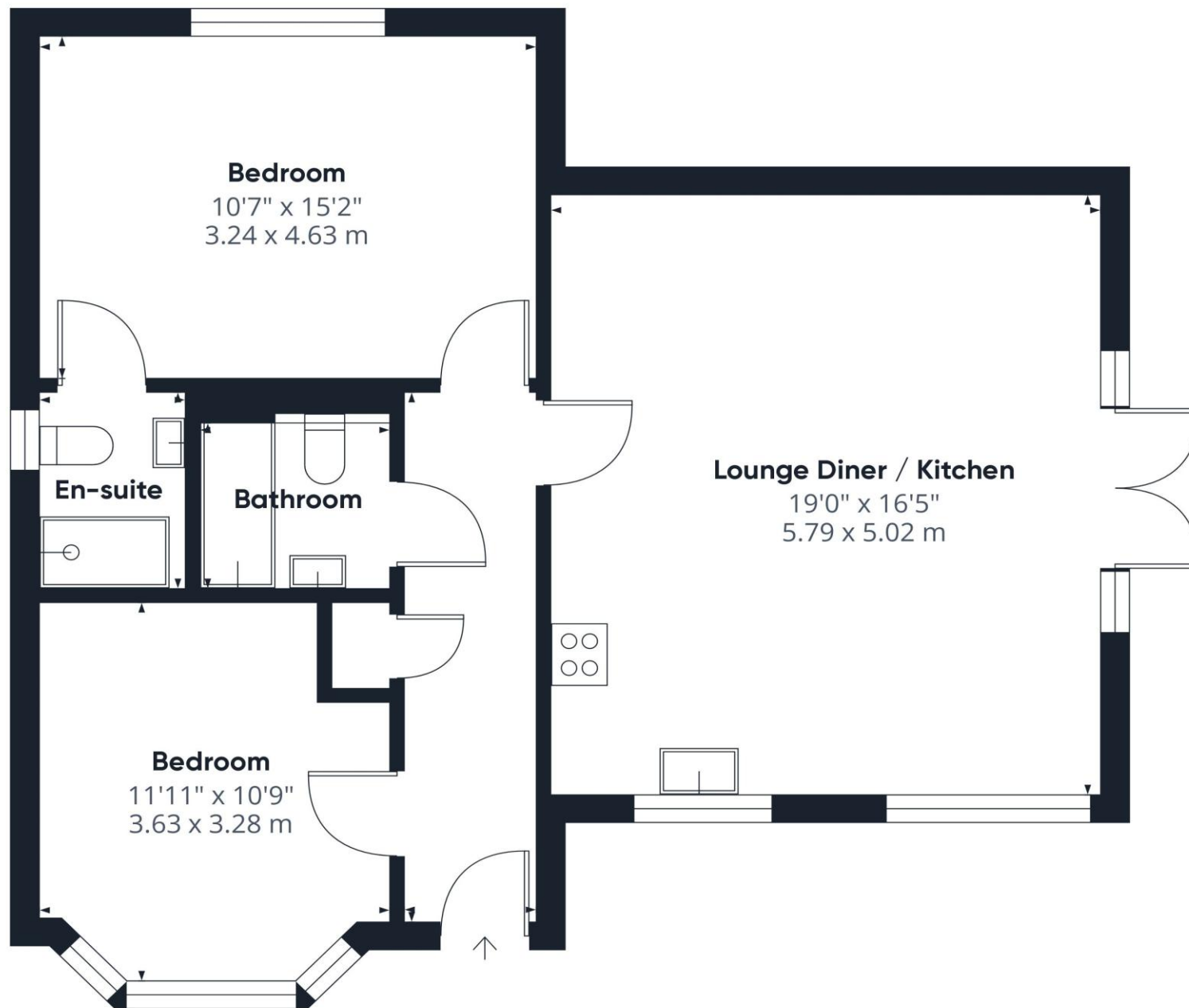
- Modern detached bungalow built in 2018 to an excellent specification
- Show home condition inside and out with stylish fittings
- Spacious kitchen/living room with views and access onto the garden
- Two comfortable double bedrooms, master bedroom with luxury en-suite shower room
- Luxury family bathroom
- Gas fired central heating, uPVC double glazed windows, flat plastered ceilings and quality floor coverings
- Off road parking
- Supremely central location with high street, bus stop, cliff top and beach just a short stroll away
- Council Tax Band 'D' - £2,287.80
- EPC rating 'B'





Location

Highcliffe is a small village in the borough of Christchurch, Dorset. The village lies on a picturesque stretch of Solent coastline with views over Christchurch Bay to the Isle of Wight. Fuelled by its enviable location, coastal walks, main line railway links to London (in under two hours) excellent schools and the popularity of the Chewton Glen Hotel, the Highcliffe Golf Course and the Nature Reserve at Steamer Point, Highcliffe is a popular area for those relocating to the coast



Approximate total area⁽¹⁾

734.2 ft²
68.21 m²

(1) Excluding balconies and terraces

While every attempt has been made to ensure accuracy, all measurements are approximate, not to scale. This floor plan is for illustrative purposes only.

Calculations were based on RICS IPMS 3C standard. Please note that calculations were adjusted by a third party and therefore may not comply with RICS IPMS 3C.

GIRAFFE360





mitchells.uk.com
highcliffe@mitchells.uk.com
01425 272206

Highcliffe
284 Lymington Road
Highcliffe
BH23 5ET

