

**First Floor**

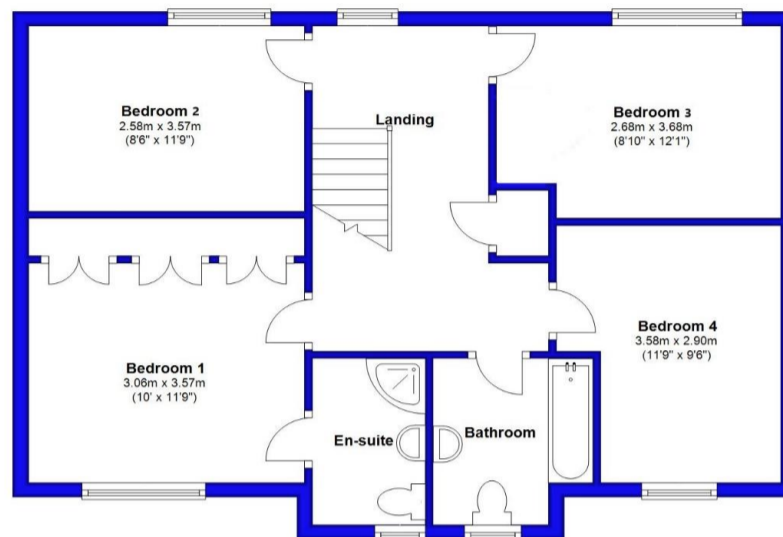


Illustration for identification purposes only; measurements are approximate, not to scale. EPC South Coast Surveys Plan produced using PlanUp.

**Mitchells**  
1963 — TODAY



**Larkspur Close, Highcliffe On Sea, BH23 4FQ**

**Asking Price: £625,000**

*Freehold*

# Larkspur Close, Highcliffe On Sea, Christchurch, Dorset, BH23 4FQ

A beautifully presented detached family house built by Hoburne Developments, the home boasts accommodation of approaching 1400 sqft and features stylish fittings and a contemporary interior, en-suite and a detached double garage. This lovely home is within the catchment area for the popular Highcliffe Schools and a short walk to the local shops at Saulflands with the Sainsbury's superstore and Friars Cliff a little further on. Vendor suited.

## Accommodation & Amenities

- Four good size bedrooms, master with fitted wardrobes
- Two fully tiled bath/shower rooms (one en-suite)
- Stylish kitchen/dining room with integrated appliances and outlook over the garden
- Separate utility room
- Superb lounge with sliding doors onto the rear garden
- High performance gas fired central heating
- Tasteful decor, UPVC windows, doors, fascias and soffits
- Detached double garage & parking for several vehicles
- Large rear garden with areas of shrub borders, lawn and patio ideal for entertaining
- Highcliffe schools catchment area
- Excellent location about a mile from the main high street shopping centre, cliff top and beach
- Council Tax 'E' £2531.29
- EPC 'B'



284 Lymington Road, Highcliffe, Christchurch, BH23 5ET | [highcliffe@mitchells.uk.com](mailto:highcliffe@mitchells.uk.com) | 01425 272206 | <https://mitchells.uk.com>



284 Lymington Road, Highcliffe, Christchurch, BH23 5ET | [highcliffe@mitchells.uk.com](mailto:highcliffe@mitchells.uk.com) | 01425 272206 | <https://mitchells.uk.com>