



10 Shepherd Close, Highcliffe on Sea, BH23 5PF

£925,000

Mitchells
1963 — TODAY



Shepherd Close, Highcliffe on Sea

An exceptional bungalow that has been extended and thoroughly refurbished by the present vendor with a very keen eye for detail. The bungalow is extremely spacious approaching 2000sqft and offers very flexible accommodation with four bedrooms and a stunning top specification kitchen/living space with access onto the large terrace. Sitting on a generous plot with large rear garden and frontage with ample parking provided by an in/out driveway, tucked away towards the end of a pleasant cul-de-sac.

- FOUR BEDROOMS • TWO BATH/SHOWER ROOMS (BOTH EN-SUITE) • LOUNGE/KITCHEN/DINER • UTILITY ROOM/CLOAKROOM • LARGE HALL • GARAGE/STORE • GARDENS • OFF-ROAD PARKING •



The Property

- Four double bedrooms
- Impressive vaulted master suite with electric and rain sensor Velux windows, walk through dressing area, en-suite bath/shower room and access onto the rear terrace
- Jack and Jill luxury bathroom serving bedrooms two and three
- Stunning lounge/kitchen/dining 'day room' with integrated appliances and electric Velux windows flooding the room with natural light and feature 7.4kwh Chesneys woodburner (log store at the side of the property)
- Utility room/separate wc with access into the garage/store
- Spacious hallway with plenty of storage
- Stylish oak architraves and skirting boards throughout, all Velux are remote controlled with rain sensors
- Large, well established and private rear garden with sun terrace ideal for outdoor entertaining
- 44mm log summer house 13' x 13' and workshop 20' x 10' both with light & power
- A good size 'in and out' driveway and plenty of room for several cars
- Excellent location within the Highcliffe schools catchment area and within a short stroll of the main high street with the cliff top and beach being a little further on
- Council Tax 'E' £2796.19
- EPC 'C'

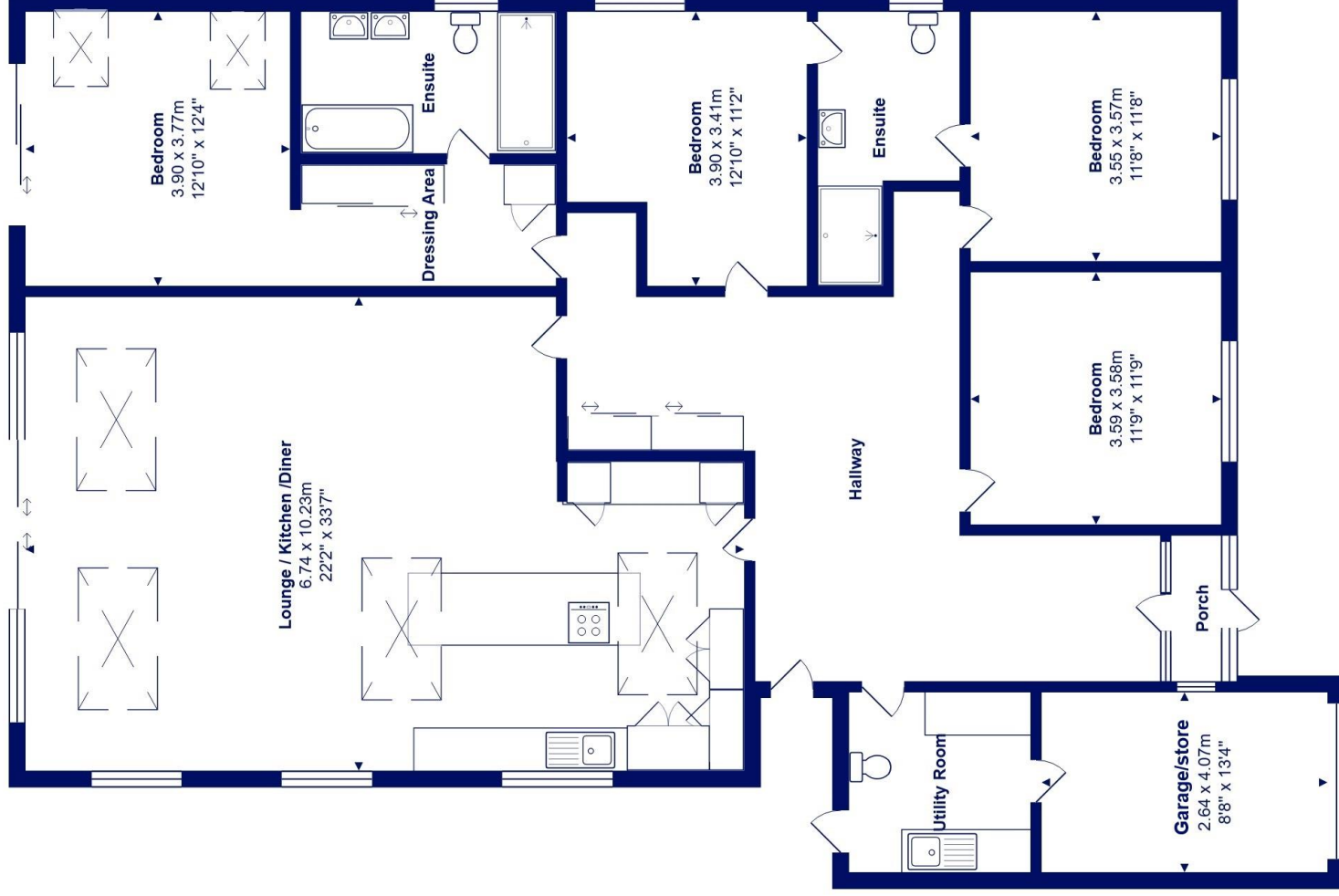




Location

Highcliffe is a small village in the borough of Christchurch, Dorset. The village lies on a picturesque stretch of Solent coastline with views over Christchurch Bay to the Isle of Wight. Fuelled by its enviable location, coastal walks, main line railway links to London (in under two hours) excellent schools and the popularity of the Chewton Glen Hotel, the Highcliffe Golf Course and the Nature Reserve at Steamer Point, Highcliffe is a popular area for those relocating to the coast.





Total Area: 182.4 m² ... 1963 ft² (excluding store)
All measurements are approximate and for display purposes only







mitchells.uk.com
highcliffe@mitchells.uk.com
01425 272206

Highcliffe on Sea
284 Lymington Road
Highcliffe on Sea
BH23 4TH

